



# Frontier DE100-XD Operation Guide (Administrator Edition)



**2nd Edition**

DE100XDADUMV20E

The Administrator Edition explains the Maintenance Tool functions that are only available in the Administrator mode.

## Table of Contents

### Chapter 6 Maintenance







6.1	Maintenance Tool .....	6-2
6.1.1	Summary of the Maintenance Tool.....	6-3
6.1.1.1	Starting and Closing the Administrator Mode.....	6-3
6.1.1.2	Moving Between Screens .....	6-5
6.1.1.3	List of Functions Available in Administrator Mode Only .....	6-6
6.1.2	Head Cleaning .....	6-7
6.1.2.1	High Power Cleaning .....	6-7
6.1.3	Operation Condition Settings .....	6-9
6.1.3.1	Power Saving .....	6-9
6.1.4	Printer Adjustment.....	6-10
6.1.4.1	Bi-directional Color Registration Adjustment .....	6-10
6.1.4.2	Paper Feed Adjustment .....	6-13
6.1.4.3	Gray Adjustment .....	6-20
6.1.5	Printer Management.....	6-36
6.1.5.1	Firmware Update .....	6-36
6.1.5.2	Adding a printer.....	6-38
6.1.5.3	Replace Printer .....	6-41
6.1.5.4	Print Speed Priority Setting.....	6-45
6.1.5.5	Condensation Prevention Time Setting.....	6-47
6.1.5.6	Delete Printer .....	6-49
6.1.5.7	Prepare Send Back.....	6-51
6.1.5.8	Precut Setting .....	6-53
6.1.5.9	Drying Mode Setting .....	6-56
6.1.5.10	Paper Information Setting .....	6-58
6.1.5.11	Automatic Firmware Update .....	6-60

## Chapter 6 Maintenance

## 6.1 Maintenance Tool

By using the Maintenance Tool from your computer you can perform adjustment and maintenance operations such as checking the printer's status, making settings, performing head cleaning and so on.

Menus that are only available in the Administrator mode are "Printer Adjustment" and "Printer Management".

Main Screen Menu	Settings
Printer Name	Select the printer.  See "6.2.2 Select Printer" in the "Operation Guide".
Head Cleaning	You can perform print head maintenance functions such as Normal Cleaning, Power Cleaning, and High Power Head Cleaning.  See "6.2.3 Head Maintenance" in the "Operation Guide".
Nozzle Check	You can print a check pattern and check for clogged nozzles.  See "6.2.3.4 Print Check Pattern" in the "Operation Guide".
Paper Settings	You can set the Paper Type and the Paper Remaining. Make these settings when replacing the paper.  See "6.2.4 Paper Settings" in the "Operation Guide".
Operation Condition Settings	You can perform various printer settings such as Warning Buzzer and Power Saving.  See "6.2.5 Operation Condition Settings" in the "Operation Guide".
Printer Adjustment	You can perform printer adjustment functions such as Bi-directional Color Resist Adjustment and Gray Adjustment.
Printer Management	You can perform printer management operations such as update the firmware and addition, replacement, removal, etc. of printers.
History	You can check the Operation History, and save log files in Collect Logs.  See "6.2.6 History" in the "Operation Guide".

## 6.1.1 Summary of the Maintenance Tool

From your computer you can perform adjustment and maintenance operations such as checking the printer's status, making settings, performing head cleaning and so on.

### 6.1.1.1 Starting and Closing the Administrator Mode

#### Important

While the printer is initializing, do not start up the maintenance tool.

#### ■ Starting (Windows)

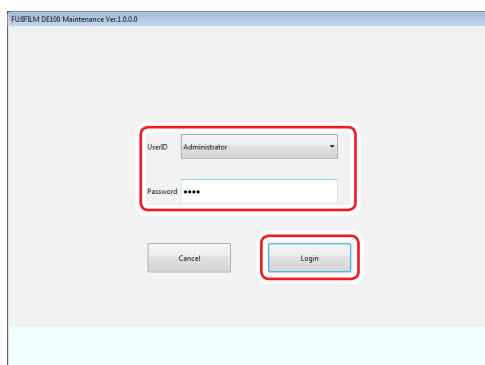
##### 1. Double-click the “Maintenance Tool” icon on the desktop.

The Login screen is displayed.

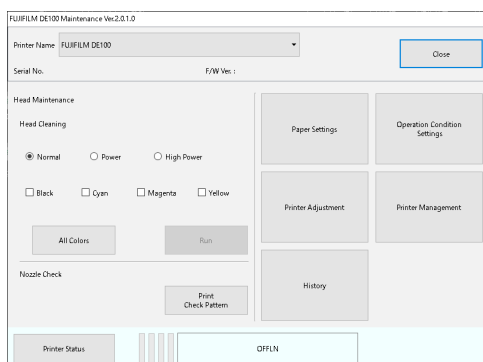
#### Note

You can also start the maintenance tool by clicking [Start] - [All Programs] - [FUJIFILM DE100 Software] - [Maintenance Tool].

##### 2. Select [Administrator] in “UserID”, enter [1111] in “Password”, and then click the [Login] button.

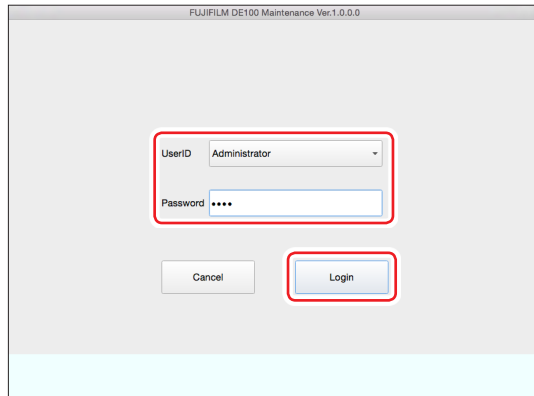


The Main screen is displayed.

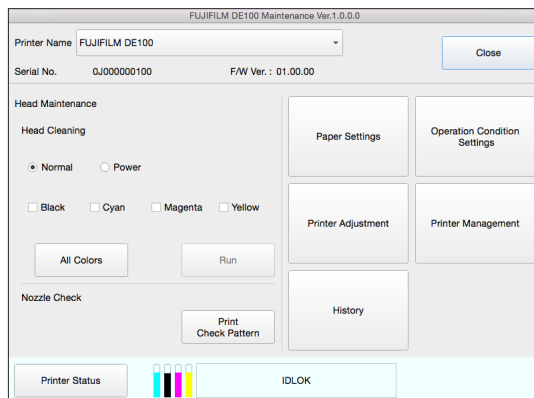


## ■ Starting (Mac OS X)

1. Double-click the “Maintenance Tool” icon in the application folder.  
The Login screen is displayed.
2. Select [Administrator] in “UserID”, enter [1111] in “Password”, and then click the [Login] button.

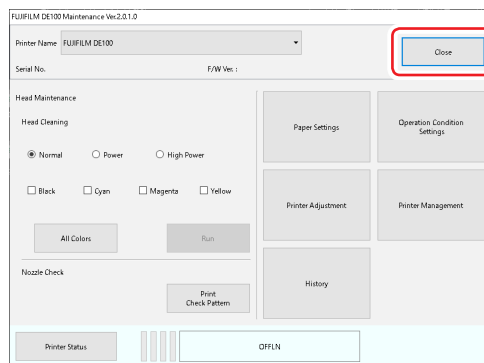


The Main screen is displayed.



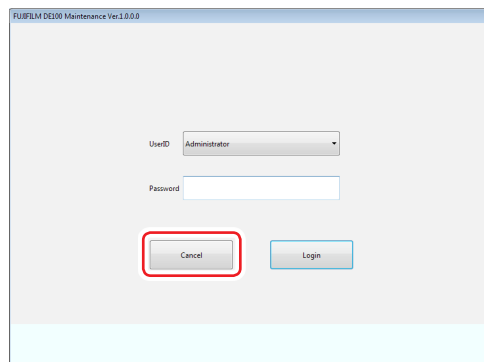
## ■ Closing

### 1. Click the [Close] button.



The Login screen is displayed again.

### 2. Click the [Cancel] button.

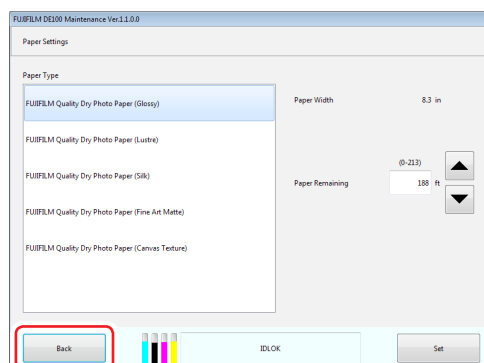


The Maintenance tool closes.

## 6.1.1.2 Moving Between Screens

### ■ Returning to the Original Screen


#### 1. Click the [Back] button on the destination screen.



Returns to the previous screen.


### 6.1.1.3 List of Functions Available in Administrator Mode Only

Main Screen Menu	Setting Item		Settings
	Large Item	Small Item	
Head Cleaning	High Power		Perform High Power head cleaning.
Operation Condition Settings	Power Saving		Set the time to switch to power saving mode.
Printer Adjustment	Bi-directional Color Registration Adjustment		Corrects the print misalignment.
	Paper Feed Adjustment		Adjusts the paper feed.
	Gray Adjustment	Color Balance	Adjusts the color balance.
		Density Adjustment	Adjusts the density (darker/lighter).
		Gradation Correction	Adjusts the gradation (difference between light and dark).
Printer Management	Firmware Update		Updates the printer firmware.
	Reflect image quality correction data		Transfer the settings data when replacing the printer manually.
	Print Speed Priority Setting		Set the Print Speed Priority Setting, which increases the print speed.
	Condensation Prevention Time Setting		Set the time the fan and heater operates after the printer shuts down.
	Printer Maintenance	Delete Printer	Delete the printers that are not connected or turned OFF from the list.
		Replace Printer	Replace the current printer with a new printer.
		Prepare Send Back	Save the data required for the printer send back repair to the PC.
		Precut Setting	Sets the additional precut setting.
		Drying Mode Setting	Set the drying mode.
	Paper Information Setting		Set the paper information.
	Automatic Firmware Update		Configures the setting to update the printer firmware automatically.

Functions other than the above are the same as those that can be controlled by the user.  
See  “6.2 Maintenance Tool” in the “Operation Guide”.

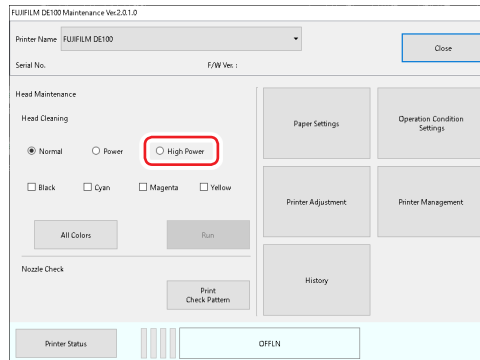


## 6.1.2 Head Cleaning

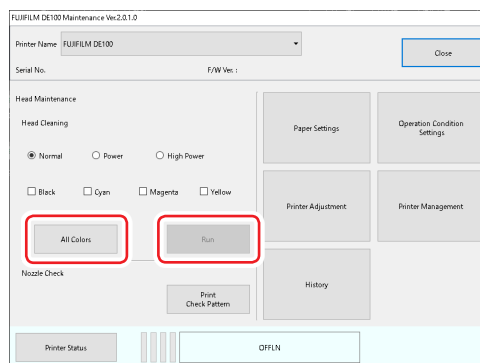
 For details of normal cleaning and power cleaning, see “6.2.3 Head Maintenance” in “Operation Guide.”

### 6.1.2.1 High Power Cleaning

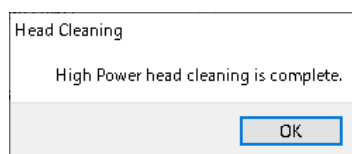
1. Select [High Power] on the main screen.



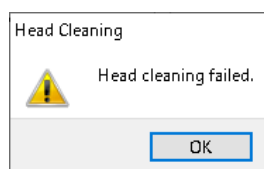
2. Click the [All Colors] button and then click the [RUN] button.



3. Check the results of head cleaning in the message displayed on the screen.

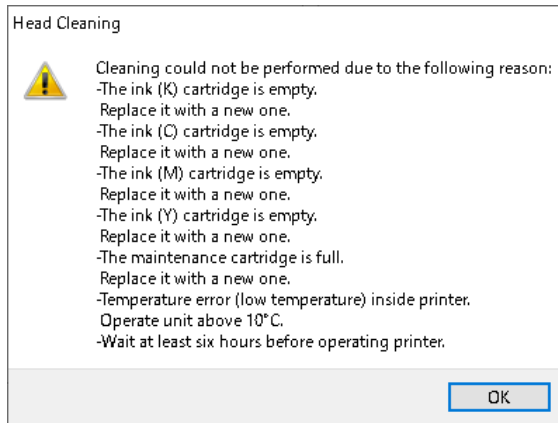


If the message, “High Power head cleaning is complete.” appears, head cleaning has completed successfully.



If the message, “Head cleaning failed.” appears, perform head cleaning again.

If the below error message appears, follow the message to resolve the issue.  
If multiple error messages occur, all error messages will be displayed on the same error message screen.



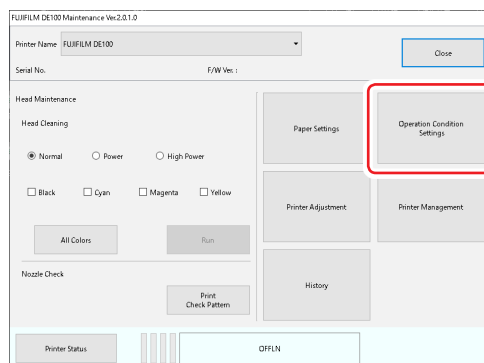
- The ink (X) cartridge is empty.  
-> Replace it with a new one.  
Note: "X" represents the ink color.
- The maintenance cartridge is full.  
-> Replace it with a new one.
- Temperature error (low temperature) inside printer.  
-> Operate unit above 10°C.
- Wait at least six hours before operating printer.  
→If the printer has not been used for more than 45 days, wait at least 6 hours before performing head cleaning.

## 6.1.3 Operation Condition Settings

### 6.1.3.1 Power Saving

Set the time before switching to Power Saving Mode. If an error has not occurred in the printer and no print jobs have been received for the specified length of time, the printer automatically switches to Power Saving Mode.

1. Click the [Operation Condition Settings] on the main screen.

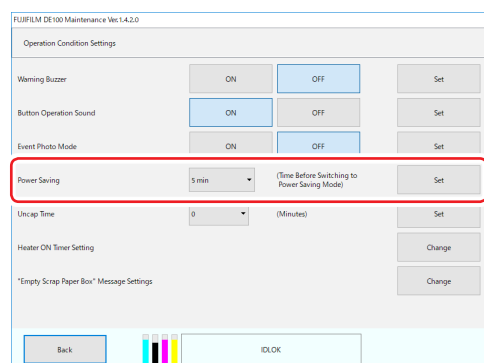


The “Operation Condition Settings” screen is displayed.

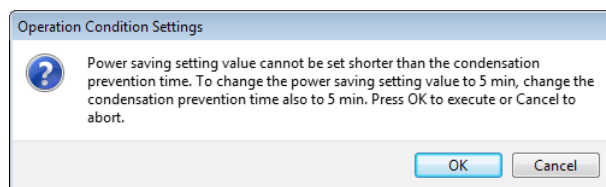
2. Select Time to Switch to Power Saving Mode, and then click the [Set] button.

Once the set time has passed, the printer switches to Power Saving Mode.

Settings: 5 min, 10 min, 15 min, 30 min, 1 hour, 2 hours, OFF



If you selected a time shorter than the condensation prevention time, a confirmation message will appear. Clicking the [OK] button also automatically changes the condensation prevention time.



The result dialog is displayed.

3. Click the [OK] button on the dialog.

Note:

Depending on the environment, Power Saving Mode may not activate at the set time as priority is given to adjusting the temperature in the printer. Power Saving Mode will be activated once temperature adjustment has completed

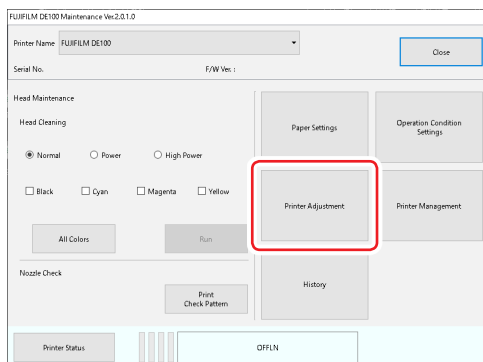
## 6.1.4 Printer Adjustment

In “Printer Adjustment”, you can perform printer adjustments such as “Bi-directional Color Registration Adjustment” and “Gray Adjustment”.

### 6.1.4.1 Bi-directional Color Registration Adjustment

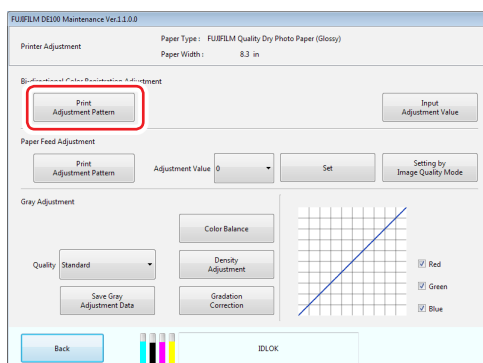
If the print results appear grainy or out of focus, perform Bi-directional Color Registration Adjustment. The Bi-directional Color Registration Adjustment function corrects print misalignments.

1. Click the [Printer Adjustment] on the main screen.



The “Printer Adjustment” screen is displayed.

2. Click the [Print Adjustment Pattern] button in “Bi-directional Color Registration Adjustment”.



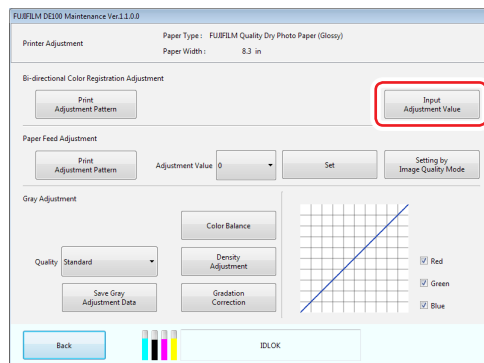
The adjustment pattern is printed.

Once the printing is complete, a dialog box indicating that the printing has completed appears.



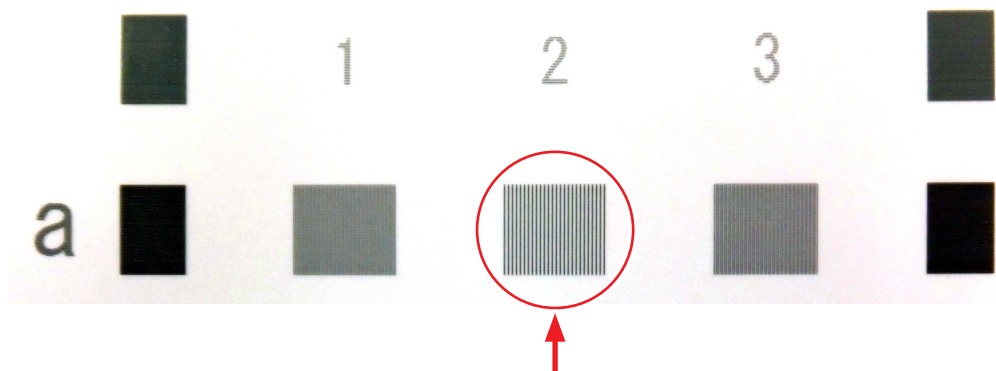
Adjustment pattern

3. Click the [OK] button on the dialog.
4. Click the [Input Adjustment Value] button.



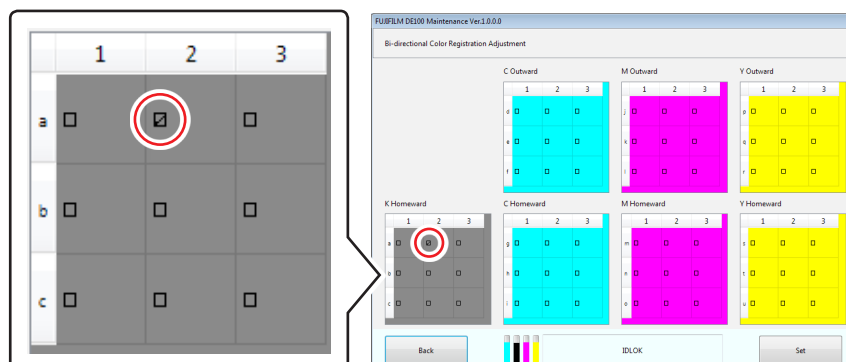
The “Bi-directional Color Registration Adjustment” screen is displayed.

5. Check the adjustment pattern and enter the check result.
  - i. In one row of patterns, select the pattern on which the white vertical line is most visible from the columns each containing a number. If two columns (columns 1 and 2, or columns 2 and 3) with comparable patterns are lined up, then select both.

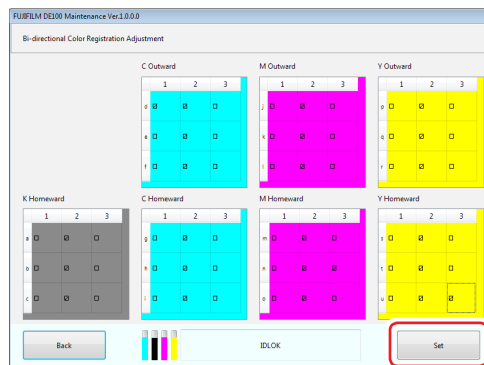


Select one of the three patterns on which the white lines are most visible.

- ii. Click the check box corresponding to the selected pattern.  
The adjustment pattern and the screen correspond to the alphabet in the row and number in the column.



- iii. Repeat the above procedure for all rows.

**6. Click the [Set] button.**

The adjustment values are set.  
The result dialog is displayed.

**7. Click the [OK] button on the dialog.****8. Click the [Back] button.**

You are taken back to the "Printer Adjustment" screen.

**9. Print the adjustment pattern again.****10. Check the adjustment pattern.**


Check that the white vertical line is most visible in column 2 for all rows from a to u.  
If column 1 or 3 is applicable, repeat the above procedure until column 2 becomes applicable.

## 6.1.4.2 Paper Feed Adjustment

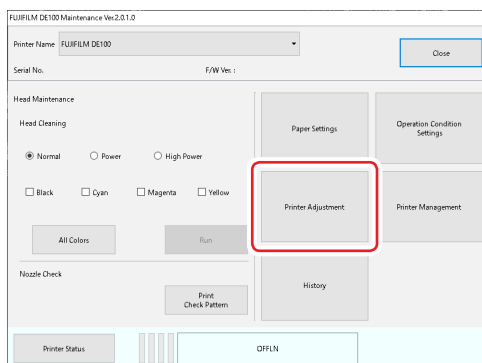
Make adjustments when there are stripes or unevenness in the print result.

Adjust the paper feed values for the surface type and width of the paper set in the printer. The adjusted values are applied to both standard mode and high quality mode.

Normally, make the adjustments with [Setting by Image Quality Mode]. If you cannot adjust the paper feed values with [Setting by Image Quality Mode], roughly make adjustments on this screen and then make fine adjustments with [Setting by Image Quality Mode].

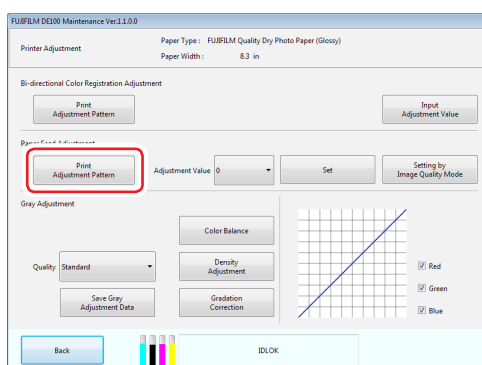
For details about with [Setting by Image Quality Mode], see  [“Setting by Image Quality Mode” \(Page 6-16\)](#).

### 1. Click the [Printer Adjustment] on the main screen.



The “Printer Adjustment” screen is displayed.

### 2. Click the [Print Adjustment Pattern] button in “Paper Feed Adjustment”.



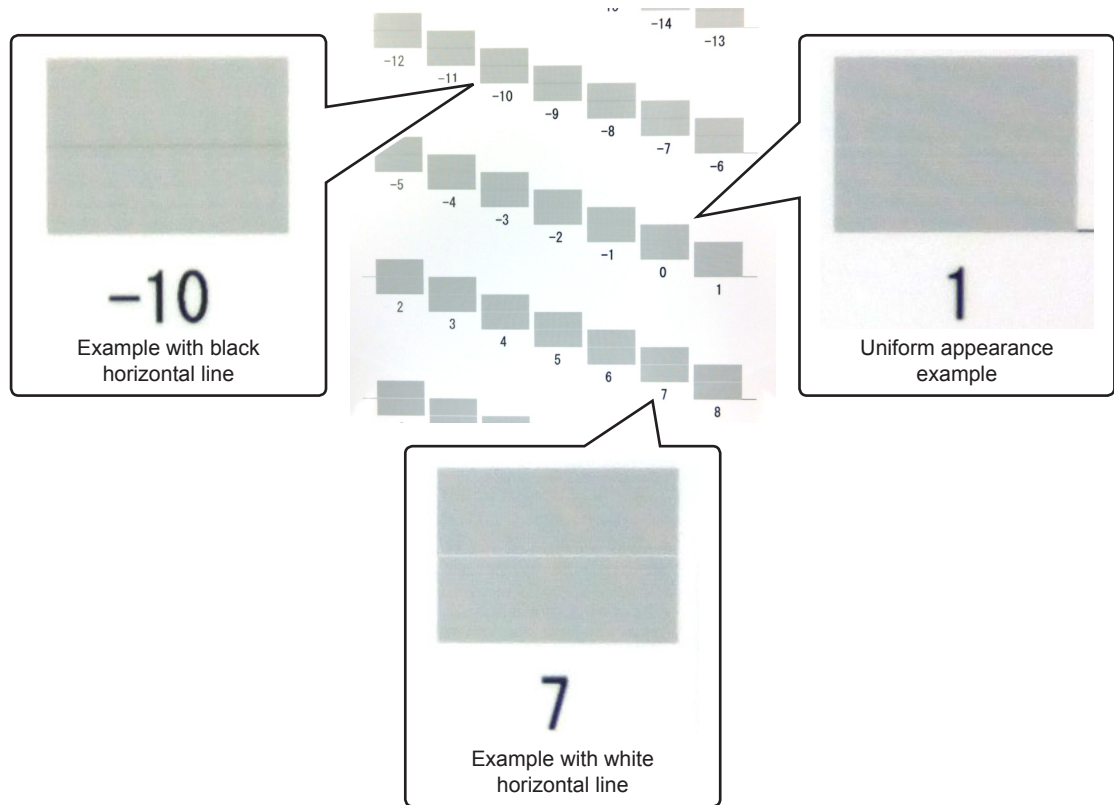
The adjustment pattern is printed.

Once the printing is complete, a dialog box indicating that the printing has completed appears.

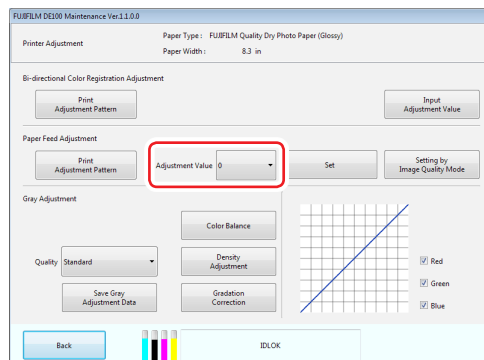


Adjustment pattern

3. Click the [OK] button on the dialog.
4. From the adjustment patterns, select a pattern which does not have a black or white horizontal line in the vertical center and looks most uniform.

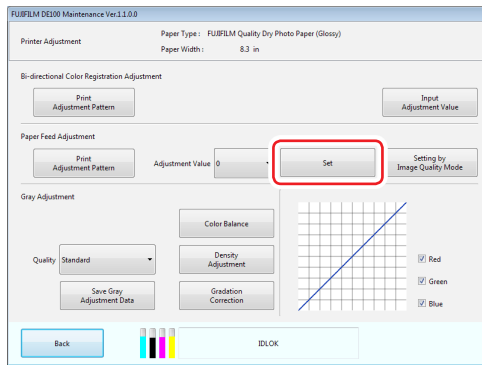


5. Select the value of the selected pattern from "Adjustment Value".





## 6. Click the [Set] button.



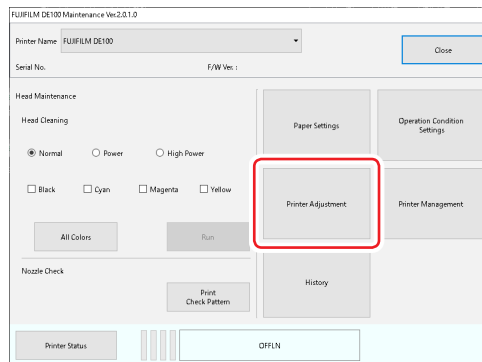
The adjustment values are set.  
The result dialog is displayed.

7. Click the [OK] button on the dialog.
8. Print the adjustment pattern again.
9. Check the adjustment pattern.  
Check that the “0” pattern looks uniform.  
If other patterns are applicable, repeat the above procedure until the “0” pattern becomes applicable.

## ■ Setting by Image Quality Mode

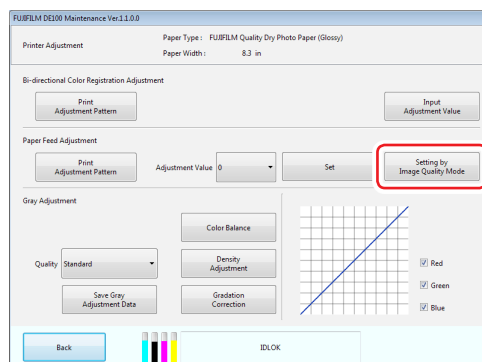
Adjust the paper feed values for the paper surface type and width by image quality mode. The surface type can only be adjusted for the paper currently set in the printer. You can adjust the paper width of the same paper surface type.

### 1. Click the [Printer Adjustment] button on the main screen.



The “Printer Adjustment” screen is displayed.

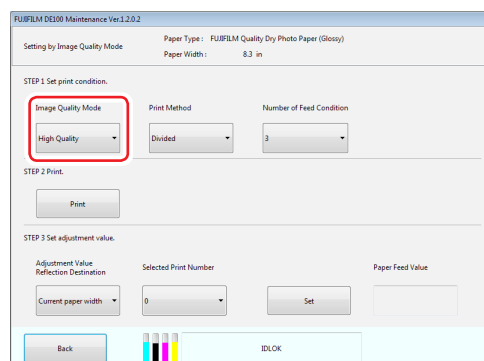
### 2. Click the [Setting by Image Quality Mode].



The “Setting by Image Quality Mode” screen is displayed.

### 3. Set the print conditions.

- i. Select the image quality mode that you want to adjust from [Image Quality Mode].



ii. **Select the printing method that you want to adjust from [Print Method].**

- Divided: Adjusts the paper feed value when printing one sheet of paper at a time to the optimal value.
- Continuous: Adjusts the paper feed value when printing multiple sheets of paper consecutively to the optimal value.

FUJIFILM DE100 Maintenance Ver.1.2.0.2

Setting by Image Quality Mode    Paper Type : FUJIFILM Quality Dry Photo Paper (Glossy)  
Paper Width : 8.3 in

STEP 1 Set print condition.

Image Quality Mode    **Print Method**    Number of Feed Condition  
High Quality    Divided    3

STEP 2 Print.

Print

STEP 3 Set adjustment value.

Adjustment Value    Selected Print Number    Paper Feed Value  
Reflection Destination  
Current paper width    0    Set

Back    ID/OK

iii. **Select the number of adjustment patterns to be printed (optional paper feed value) from [Number of Feed Condition].**

- 3: Prints the current paper feed value and an adjustment pattern with an allowance of  $\pm 1$  step.
- 5: Prints the current paper feed value and an adjustment pattern with an allowance of  $\pm 2$  steps.

FUJIFILM DE100 Maintenance Ver.1.2.0.2

Setting by Image Quality Mode    Paper Type : FUJIFILM Quality Dry Photo Paper (Glossy)  
Paper Width : 8.3 in

STEP 1 Set print condition.

Image Quality Mode    Print Method    **Number of Feed Condition**  
High Quality    Divided    3

STEP 2 Print.

Print

STEP 3 Set adjustment value.

Adjustment Value    Selected Print Number    Paper Feed Value  
Reflection Destination  
Current paper width    0    Set

Back    ID/OK

**4. Click the [Print] button.**

FUJIFILM DE100 Maintenance Ver.1.2.0.2

Setting by Image Quality Mode    Paper Type : FUJIFILM Quality Dry Photo Paper (Glossy)  
Paper Width : 8.3 in

STEP 1 Set print condition.

Image Quality Mode    Print Method    Number of Feed Condition  
High Quality    Divided    3

STEP 2 Print.

**Print**

STEP 3 Set adjustment value.

Adjustment Value    Selected Print Number    Paper Feed Value  
Reflection Destination  
Current paper width    0    Set

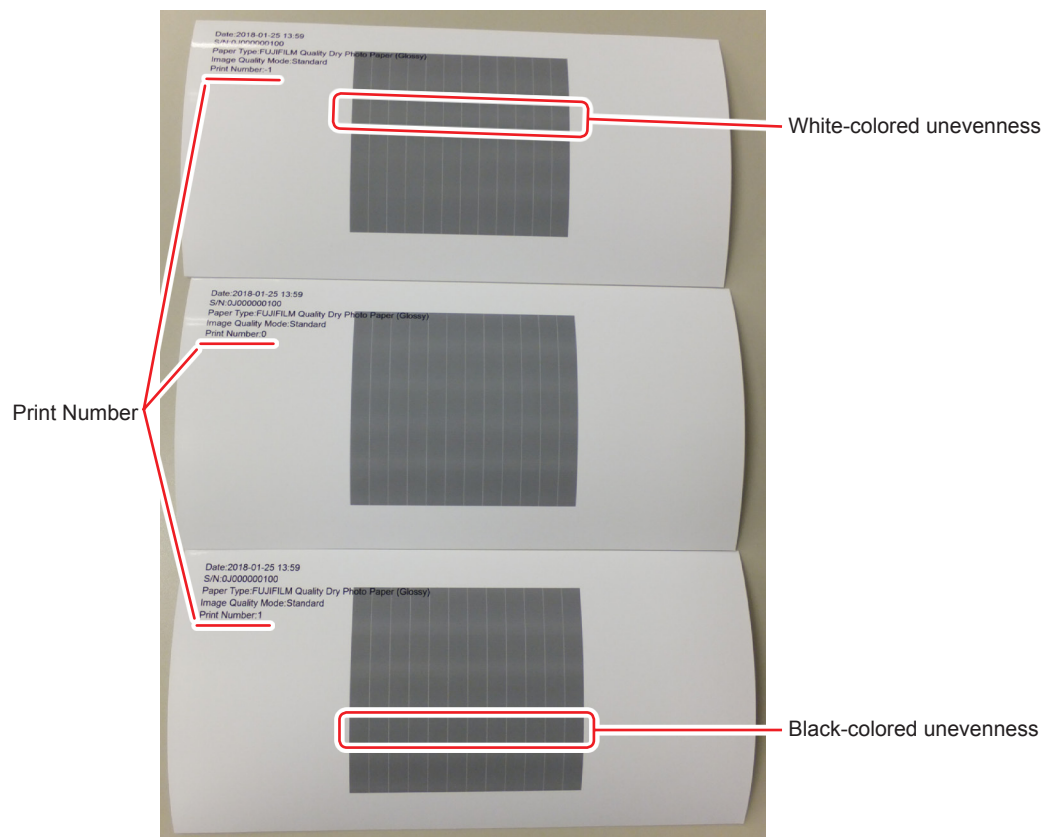
Back    ID/OK

The adjustment pattern is printed.  
A result dialog is displayed.

**5. Click the [OK] button on the dialog.**

**6. From the adjustment patterns, select the pattern that does not have a black or white colored unevenness horizontally and looks the most uniform.**

If the paper feed amount is large, you can see black-colored unevenness, but if it is small, you can see white-colored unevenness.



**7. Select where to apply the adjustment value and print number of the selected pattern.**

FUJIFILM DE100 Maintenance Ver.1.2.0.2

Setting by Image Quality Mode      Paper Type: FUJIFILM Quality Dry Photo Paper (Glossy)  
Paper Width: 8.3 in

STEP 1 Set print condition.

Image Quality Mode: High Quality      Print Method: Divided      Number of Feed Condition: 3

STEP 2 Print.

Print

STEP 3 Set adjustment value.

Adjustment Value: Reflection Compensation      Selected Print Number: 0      Paper Feed Value:      Set

Current paper width: 0

Back      ID/OK

## 8. Click the [Set] button.

The adjustment values are set.  
A result dialog is displayed.

## 9. Click the [OK] button on the dialog.

The set adjustment value is displayed in “Paper Feed Value”.

## 10. Print the adjustment pattern again.

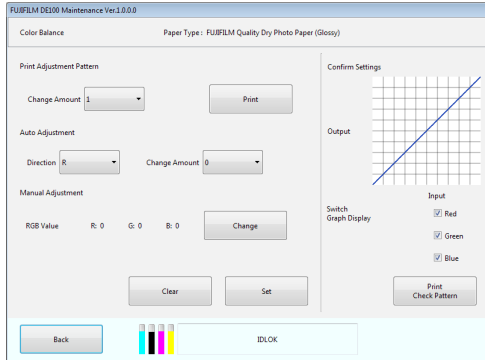

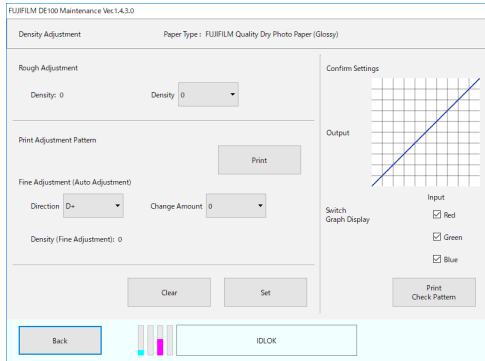

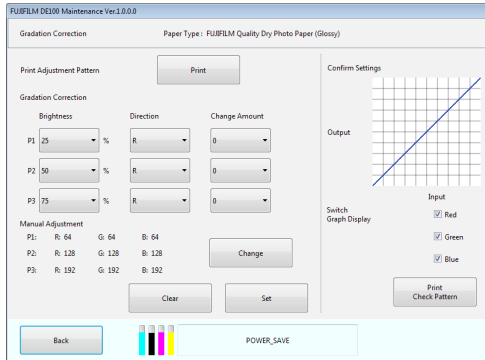

## 11. Check the adjustment pattern.

Check that the pattern for print number “0” looks uniform.

If other patterns are applicable, repeat the above steps until the “0” pattern is applicable.

### 6.1.4.3 Gray Adjustment

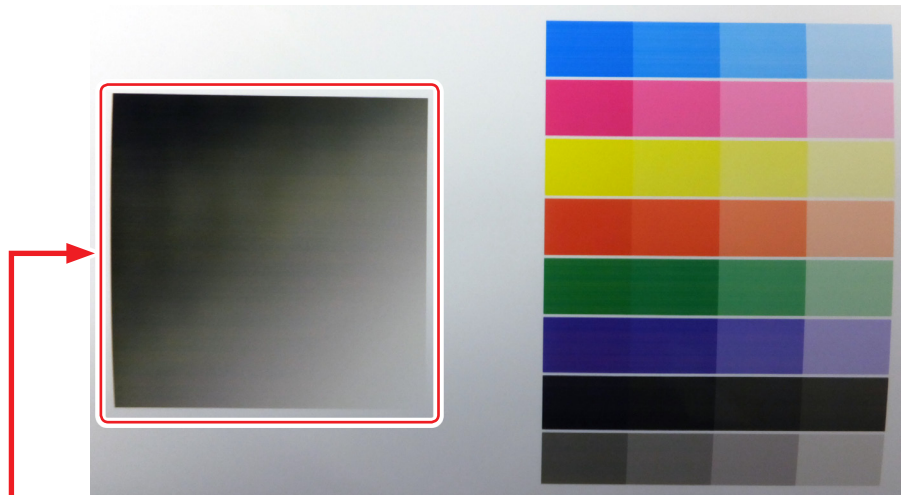
Adjust each value for color balance, density, and gradation, to correct the print colors. You can perform adjustments for “Standard” and “High Quality”. Print an adjustment pattern, and then select the best setting from the patterns.

Item	Explanation
Color Balance	<p>Adjusts the color balance by changing the intensity of R, G, and B.</p>  <p>See  “Color Balance” (Page 6-22) for more details.</p>
Density Adjustment	<p>Adjusts the density (darker/lighter).</p>  <p>See  “Density Adjustment” (Page 6-27) for more details.</p>
Gradation Correction	<p>Adjusts the gradation (difference between light and dark).</p>  <p>See  “Gradation Correction” (Page 6-30) for more details.</p>

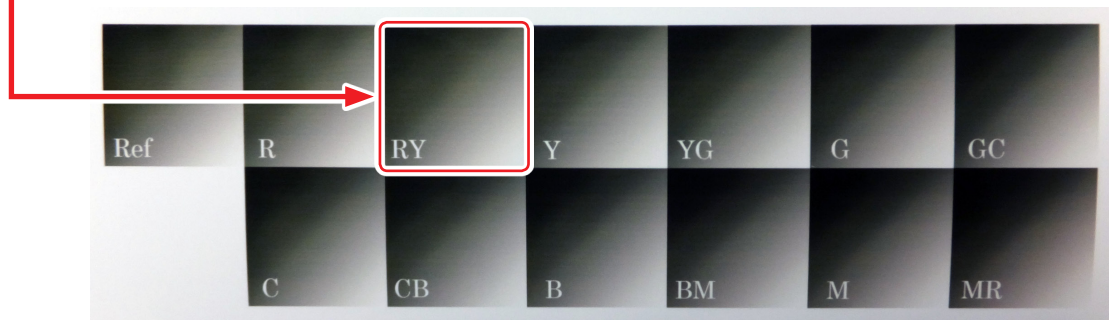
Note:

When multiple printers are connected, make adjustments by following the procedure below to match the colors between printers.

1. Print the check pattern from the standard printer.
2. Print the adjustment pattern from the printer for color matching.
3. Select the adjustment pattern that is closest to the image of the standard printer.



Adjustment pattern for the standard printer

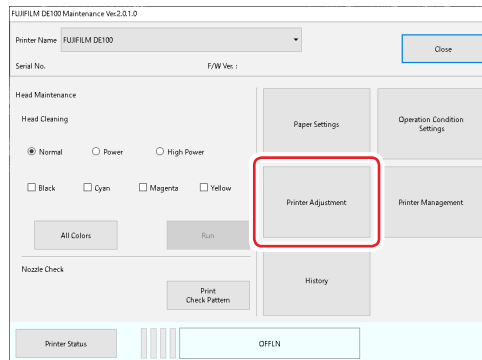


Adjustment pattern for the printer for color matching

4. Adjust the printer for color matching using the selected adjustment values.

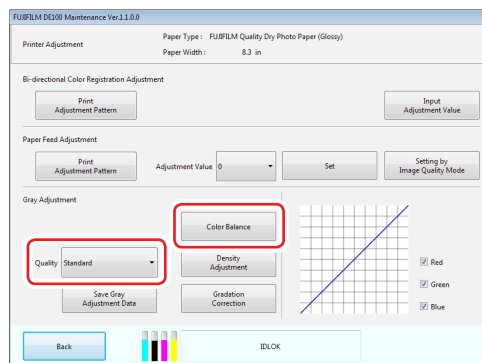
## ■ Color Balance

1. Click the [Printer Adjustment] on the main screen.



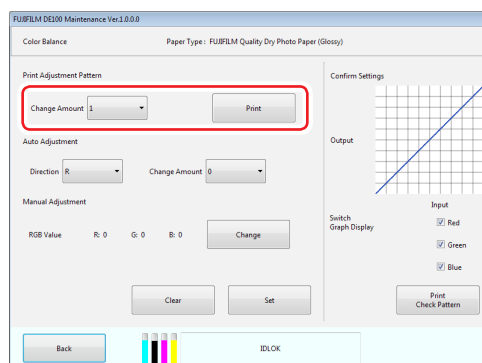
The “Printer Adjustment” screen is displayed.

2. Select the image quality setting you want to adjust from “Quality”, and then click the [Color Balance] button.



The “Color Balance” screen is displayed.

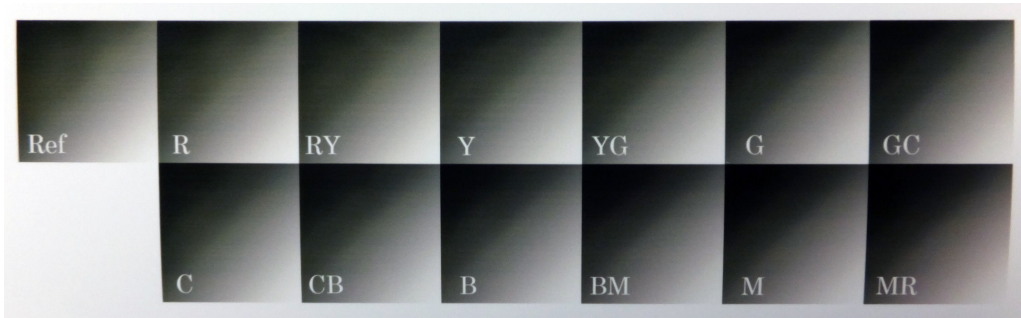
3. Select the change amount from “Change Amount”, and then click the [Print] button.  
If the selected value is large, an adjustment pattern with greater variations in the correction values is printed. Select a small value to fine-tune your adjustments.



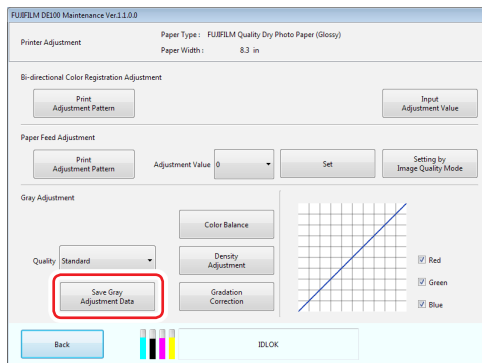
The adjustment pattern is printed.



- 4. Select the best pattern from the adjustment patterns, and check the adjustment value.**  
 The adjustment values are the letters and numbers printed at the bottom left of each pattern. The letters show the direction of the color to be adjusted. “Ref” indicates no adjustment.



- 5. Adjusts the color balance.**
- To adjust it automatically, refer to “To adjust the color balance automatically” (Page 6-24).
  - To adjust it manually, refer to “To adjust the color balance manually” (Page 6-25).
- 6. Click the [Save Gray Adjustment Data] button.**



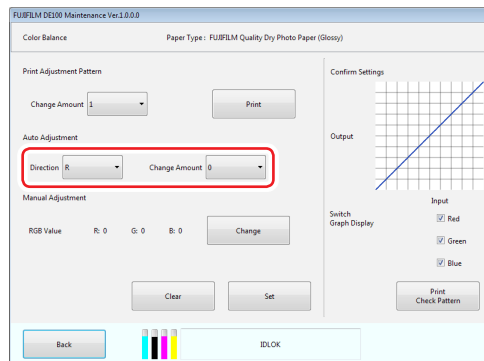
The gray adjustment data is saved.  
 The result dialog is displayed.

- 7. Click the [OK] button on the dialog.**

- To adjust the color balance automatically

1. Set the “Direction” and “Change Amount”.

Set the adjustment number for the selected adjustment value.

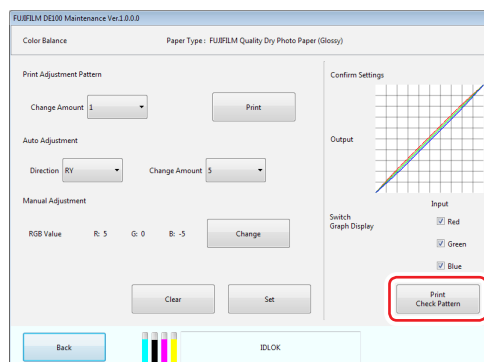


When you change the settings, the changes are reflected in the graph (tone curve) on the right of the screen.

Note:

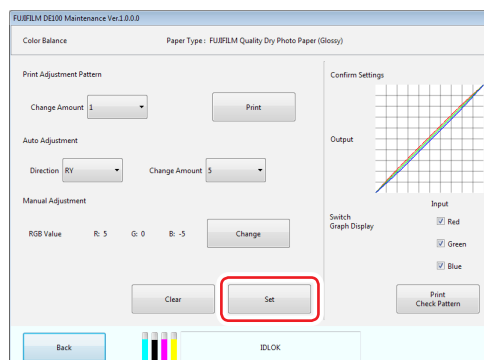
- The tone curve shows the output strength for each input color (R: Red, G: Green, and B: Blue). When there are no corrections, the line goes straight from the top right to the bottom left; if the line curves down from this position, the colors become darker, and if the line curves up, the colors become lighter.
- You can switch the color displayed in the tone curve by selecting/deselecting the check box of each color.

2. Click the [Print Check Pattern] button.



The check pattern is printed. Check that the color balance is as you intended.

3. Click the [Set] button.



The settings are applied.  
The result dialog is displayed.

Note: If you click the [Clear] button, the adjustment value returns to its default value.

4. Click the [OK] button on the dialog.

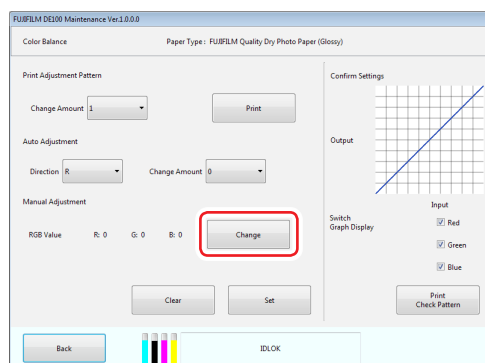
5. Click the [Back] button.

You are taken back to the “Printer Adjustment” screen.

- **To adjust the color balance manually**

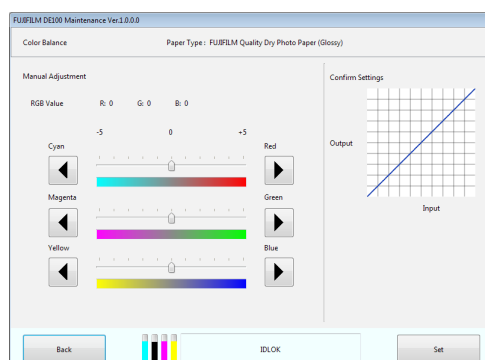
When adjusting manually, the value set in Automatic Adjustment is no longer used.

1. Click the [Change] button.



The “Manual Adjustment” screen is displayed.

2. Click the left or right direction button to change the color and change amount to be adjusted.

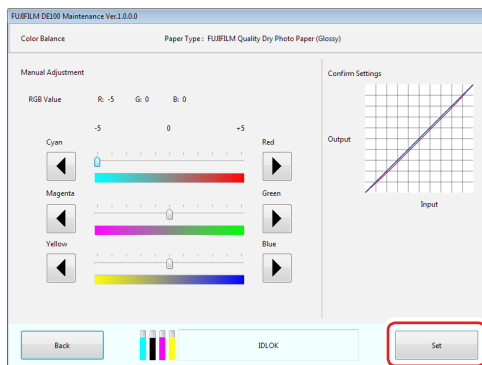


When you change the settings, the changes are reflected in the graph (tone curve) on the right of the screen.

Note:

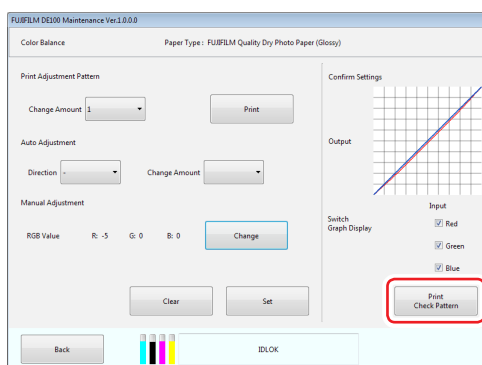
- The tone curve shows the output strength for each input color (R: Red, G: Green, and B: Blue). When there are no corrections, the line goes straight from the top right to the bottom left; if the line curves down from this position, the colors become darker, and if the line curves up, the colors become lighter.
- You can switch the color displayed in the tone curve by selecting/deselecting the check box of each color.

### 3. Click the [Set] button.



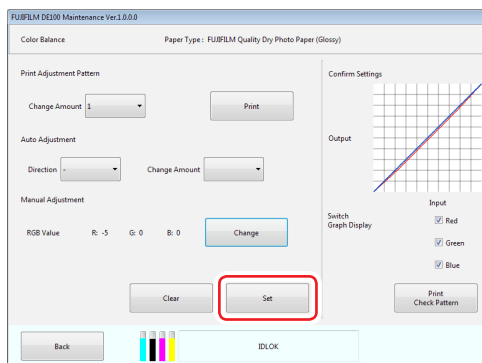
The settings are applied.  
Returns to the “Color Balance” screen.

### 4. Click the [Print Check Pattern] button.



The check pattern is printed. Check that the color balance is as you intended.

### 5. Click the [Set] button.



The settings are applied.  
The result dialog is displayed.

Note: If you click the [Clear] button, the adjustment value returns to its default value.

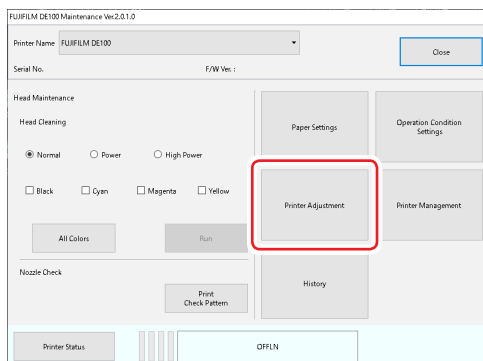
### 6. Click the [OK] button on the dialog.

### 7. Click the [Back] button.

You are taken back to the “Printer Adjustment” screen.

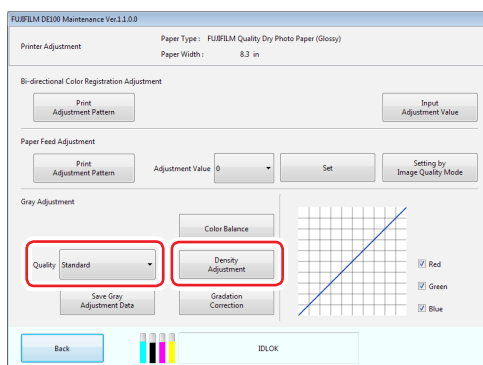
## ■ Density Adjustment

### 1. Click the [Printer Adjustment] on the main screen.



The “Printer Adjustment” screen is displayed.

### 2. Select the image quality setting you want to adjust in “Quality”, and then click the [Density Adjustment] button.



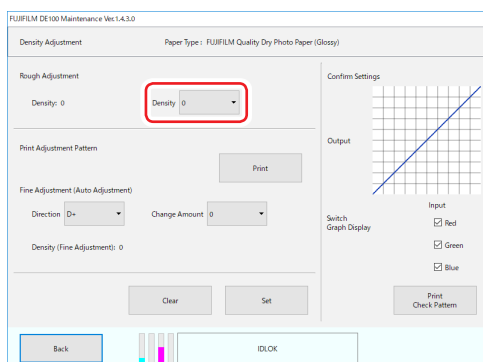
The “Density Adjustment” screen is displayed.

### 3. Select the density for rough adjustment.

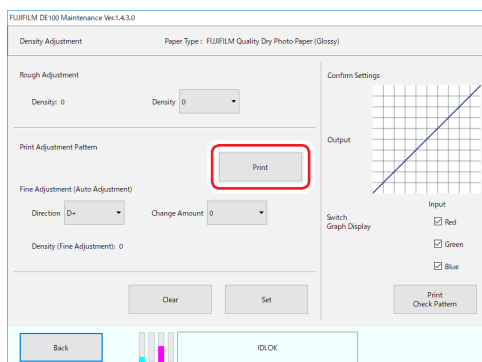
Setting range: 0, -1, -2, -3, and -4

[0] is the standard density. The smaller the value, the lower the density.

The value displayed to the left of the drop-down list is the current setting value.



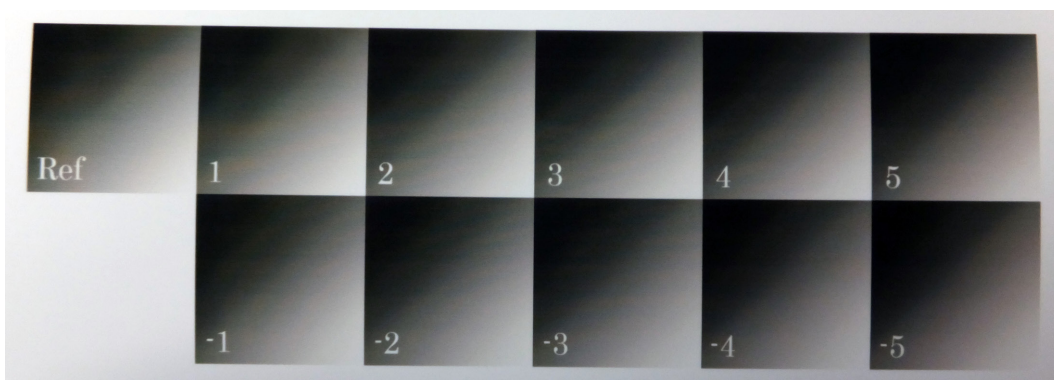
#### 4. Click the [Print] button.



The adjustment pattern is printed.

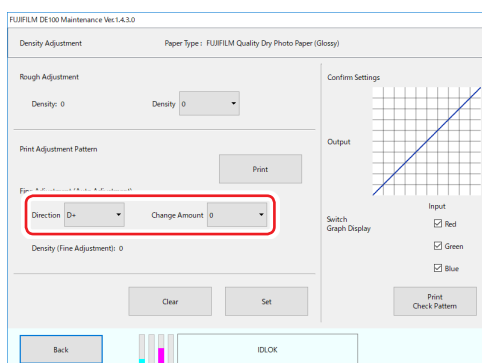
#### 5. Select the best pattern from the adjustment patterns, and check the adjustment value.

The adjustment values are the numbers printed at the bottom left of each pattern. "Ref" indicates no adjustment.



#### 6. Set [Direction] and [Change Amount].

Set the adjustment value for the selected adjustment pattern. Set the light and darkness (D+ and D-) for [Direction], and the value for [Change Amount].

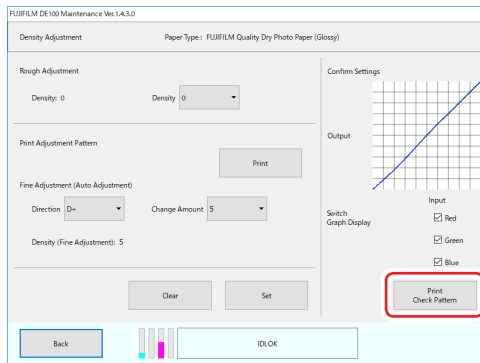


When you change the settings, the changes are reflected in the graph (tone curve) on the right side of the screen.

Note:

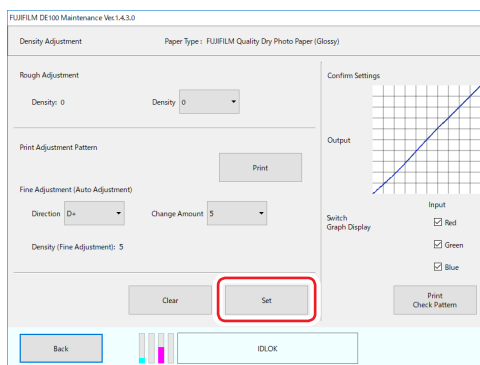
- The tone curve shows the output strength for each input color (R: Red, G: Green, and B: Blue). When there are no corrections, the line goes straight from the top right to the bottom left; if the line curves down from this position, the colors become darker, and if the line curves up, the colors become lighter.
- You can change the color displayed in the tone curve by selecting or clearing the check box for each color.

## 7. Click the [Print Check Pattern] button.



The check pattern is printed. Check that the color balance is as you intended.

## 8. Click the [Set] button.



The settings are applied.

A result dialog is displayed.

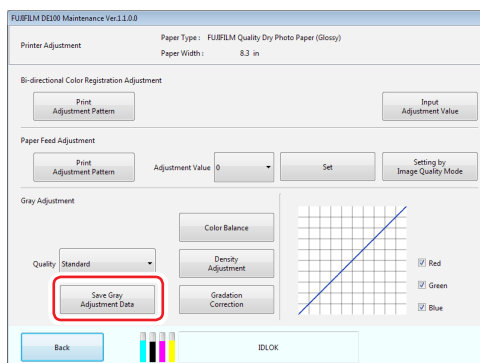
Note: If you click the [Clear] button, the adjustment value returns to its default value.

## 9. Click the [OK] button on the dialog.

## 10. Click the [Back] button.

You are taken back to the “Printer Adjustment” screen.

## 11. Click the [Save Gray Adjustment Data] button.



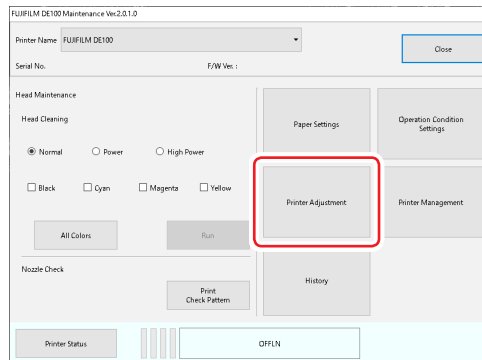
The gray adjustment data is saved.

The result dialog is displayed.

## 12. Click the [OK] button on the dialog.

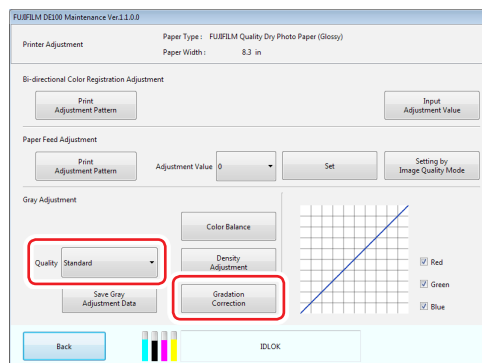
## ■ Gradation Correction

1. Click the [Printer Adjustment] on the main screen.



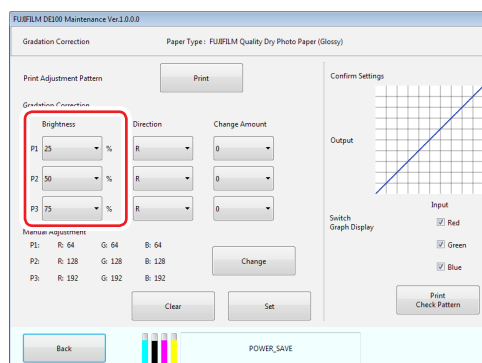
The “Printer Adjustment” screen is displayed.

2. Select the image quality setting you want to adjust in “Quality”, and then click the [Gradation Correction] button.



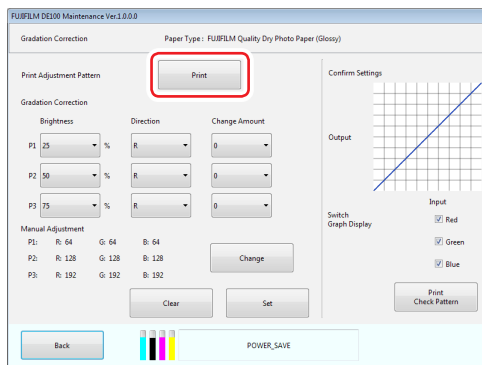
The “Gradation Correction” screen is displayed.

3. Adjust the settings for “Brightness” points (P1: shadows, P2: intermediate colors, P3: highlights) if necessary.  
Setting range: 0 to 100 %





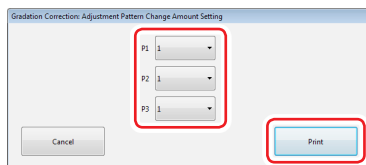
#### 4. Click the [Print] button.



The “Gradation Correction: Adjustment pattern Change Amount Setting” screen is displayed.

#### 5. Select the adjustment pattern change amount at each point and click the [Print] button.

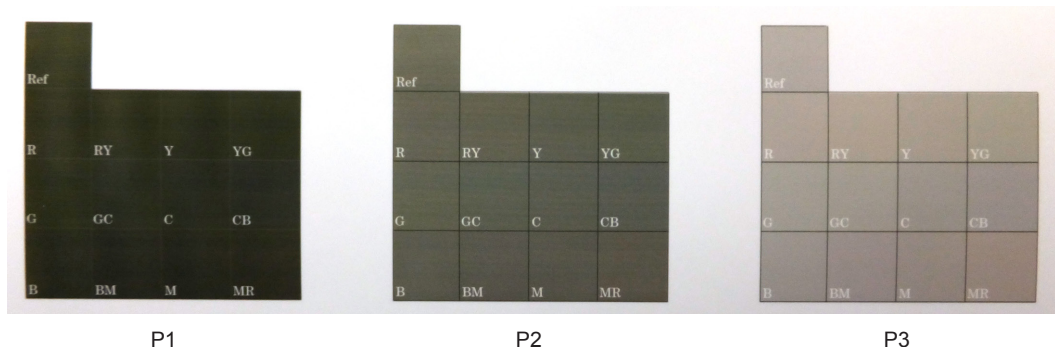
If the value is large, an adjustment pattern with a large number of variations in the correction values is printed. Select a small value to fine-tune your adjustments. Set the change amount for each point; P1, P2, and P3.



The adjustment pattern is printed.

#### 6. Select the best pattern from the adjustment patterns, and check the adjustment value.

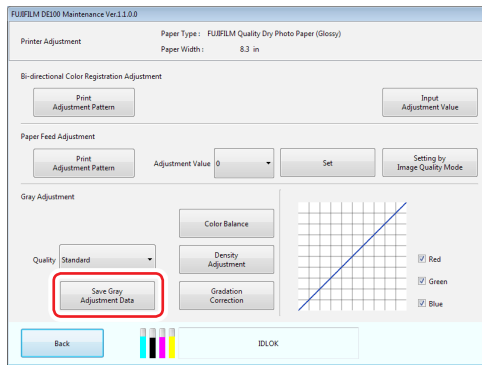
The adjustment values are the letters and numbers printed at the bottom left of each pattern. The letters show the direction of the color to be adjusted. “Ref” indicates no adjustment. Check each brightness point; P1 (shadows), P2 (intermediate colors), and P3 (highlights).



#### 7. Adjusts the gradation.

- To adjust it automatically, refer to “To adjust the gradation automatically” (Page 6-33).
- To adjust it manually, refer to “To adjust the gradation manually” (Page 6-34).

**8. Click the [Save Gray Adjustment Data] button.**



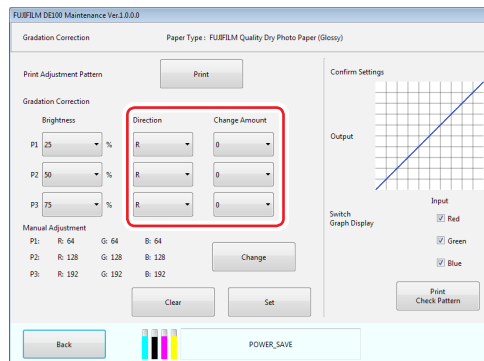
The gray adjustment data is saved.  
The result dialog is displayed.

**9. Click the [OK] button on the dialog.**

- To adjust the gradation automatically

1. Set the “Direction” and “Change Amount”.

Set the adjustment value for the selected adjustment pattern.

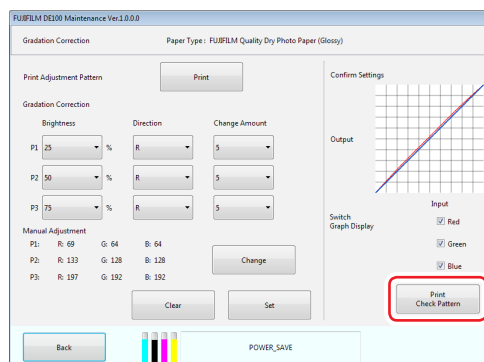


When you change the settings, the changes are reflected in the graph (tone curve) on the right of the screen.

Note:

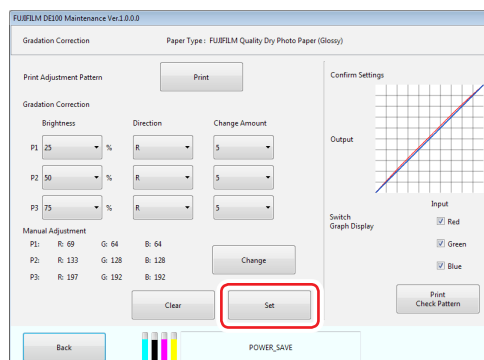
- The tone curve shows the output strength for each input color (R: Red, G: Green, and B: Blue). When there are no corrections, the line goes straight from the top right to the bottom left; if the line curves down from this position, the colors become darker, and if the line curves up, the colors become lighter.
- You can switch the color displayed in the tone curve by selecting/deselecting the check box of each color.

2. Click the [Print Check Pattern] button.



The check pattern is printed. Check that the color balance is as you intended.

3. Click the [Set] button.



The settings are applied.  
The result dialog is displayed.

Note: If you click the [Clear] button, the adjustment value returns to its default value.

4. Click the [OK] button on the dialog.

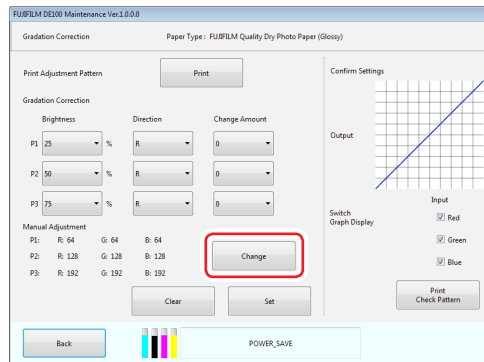
5. Click the [Back] button.

You are taken back to the “Printer Adjustment” screen.

- **To adjust the gradation manually**

When adjusting manually, the value set in Automatic Adjustment is no longer used.

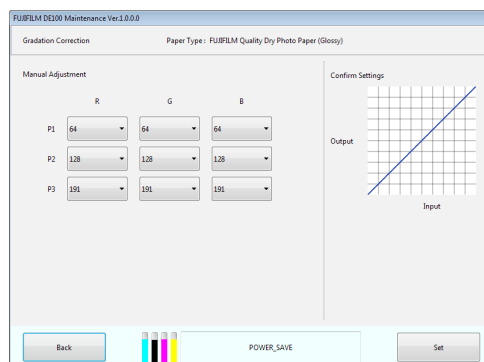
1. Click the [Change] button.



The “Manual Adjustment” screen is displayed.

2. Set each color (R: red, G: green, B: blue) for each brightness point (P1: shadows, P2: intermediate colors, P3: highlights) to be adjusted and change the gradation.

Setting range (for each color): 0 to 100 %

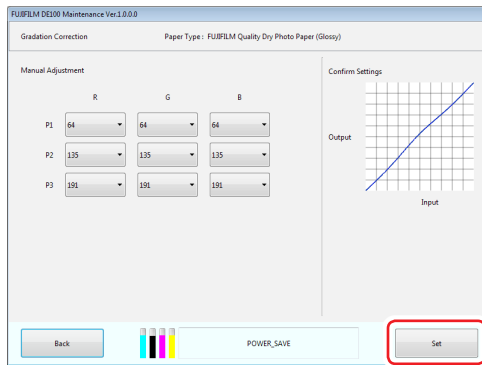


When you change the settings, the changes are reflected in the graph (tone curve) on the right of the screen.

Note:

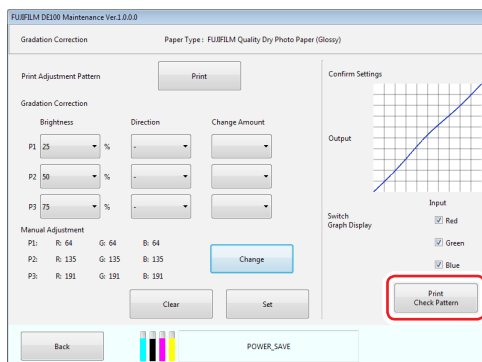
The tone curve shows the output strength for each input color (R: Red, G: Green, and B: Blue). When there are no corrections, the line goes straight from the top right to the bottom left; if the line curves down from this position, the colors become darker, and if the line curves up, the colors become lighter.

### 3. Click the [Set] button.



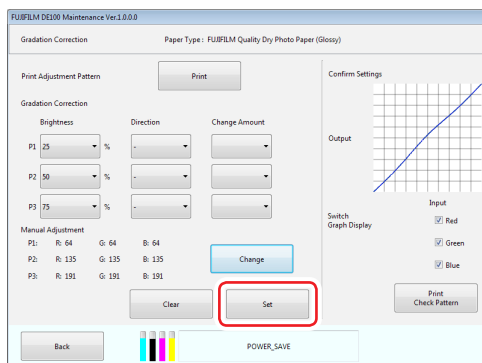
The settings are applied.  
Returns to the “Gradation Correction” screen.

### 4. Click the [Print Check Pattern] button.



The check pattern is printed. Check that the color balance is as you intended.

### 5. Click the [Set] button.



The settings are applied.  
The result dialog is displayed.

Note: If you click the [Clear] button, the adjustment value returns to its default value.

### 6. Click the [OK] button on the dialog.

### 7. Click the [Back] button.

You are taken back to the “Printer Adjustment” screen.

## 6.1.5 Printer Management

In Printer Management, you can perform printer management operations such as update the firmware and addition, replacement, removal, etc. of printers.

### 6.1.5.1 Firmware Update

Updates the printer firmware.

As automatic firmware updates are normally turned on, this function is not used.

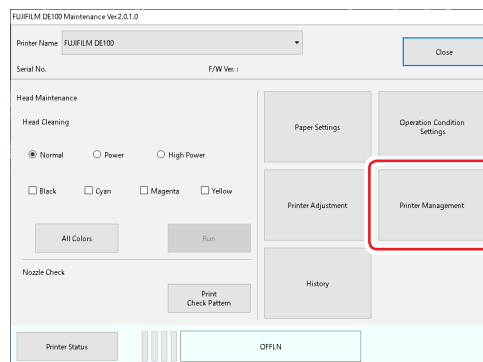
 [“6.1.5.11 Automatic Firmware Update” \(Page 6-60\)](#)

**1. Place the firmware updater file in the following location:**

[Windows] C:\FUJIFILM\_DE100\MaintenanceTool\FirmwareData

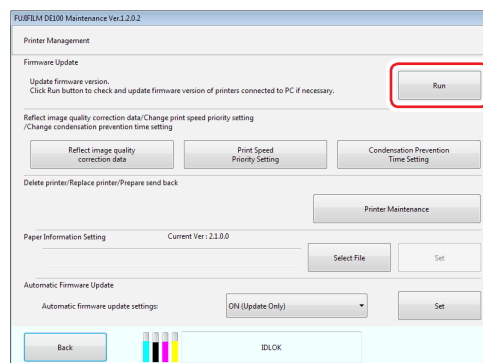
[Mac OS X] \Library\Application Support\FUJIFILM\DE100\MaintenanceToolData\FirmwareData

**2. Click the [Printer Management] button on the main screen.**



The “Printer Management” screen is displayed.

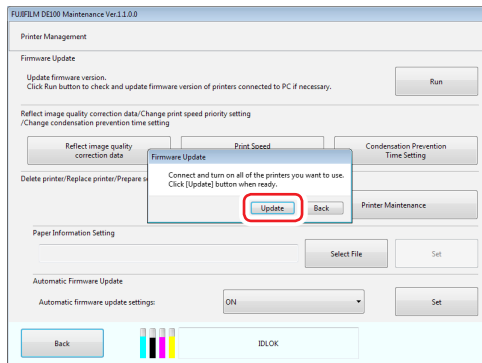
**3. Click the [Run] button.**



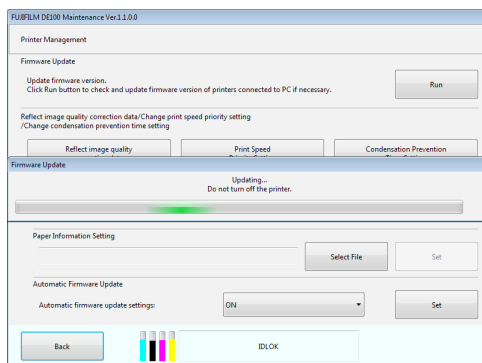
The “Firmware Update” screen is displayed.

**4. Connect all printers to update the firmware for to the PC and turn on the power.**

## 5. Click the [Update] button.



The firmware update is started.



## CAUTION

The firmware update takes approx. 30 minutes. Do not turn off the PC or printer while updating the firmware.

Once the firmware has been updated, a dialog box indicating that the firmware has been updated appears.

## 6. Click the [OK] button on the dialog.

### 6.1.5.2 Adding a printer

Adds a new printer.

There are two ways of adding a printer: automatic and manual.


#### Important

To add a printer, you must log on as a user with administrative privileges.

#### ■ To add the printer automatically

##### 1. Turn ON the automatic printer replacement function.

This function is set to ON by default.

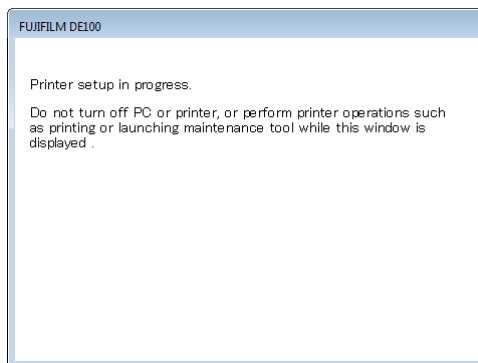
Refer to  “2.5.2 Turning ON the Automatic Printer Replacement Function” in the “Operation Guide”.

##### 2. With an existing printer already connected to the PC and turned on, connect the printer to be added to the PC using a USB cable.

##### 3. Turn ON the printer.

The printer setup screen is displayed.

The printer setup takes 1 to 30 minutes.



#### CAUTION


**Never turn off the PC or printer while setting up the printer.**

The printer setup screen closes when the printer addition is complete.



## ■ To add the printer manually

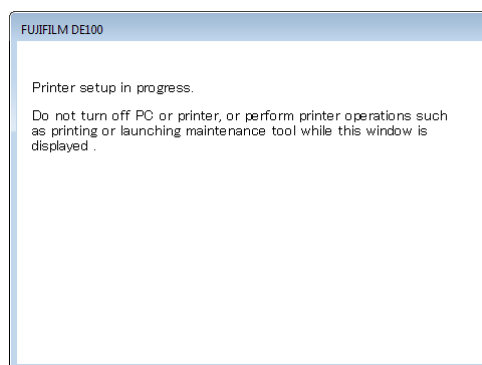
### 1. Turn OFF the automatic printer replacement function.

Refer to  “2.5.1 Turning OFF the Automatic Printer Replacement Function” in the “Operation Guide”.

### 2. Connect the printer to be added to the PC using a USB cable.

### 3. Turn ON the printer.

The printer setup screen is displayed.  
The printer setup takes 1 to 30 minutes.



## CAUTION

Never turn off the PC or printer while setting up the printer.

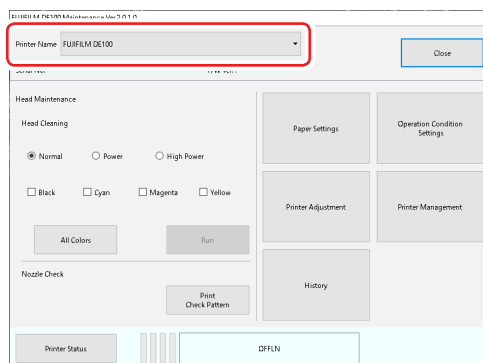
The printer setup screen closes when the printer addition is complete.

### 4. Start the Maintenance Tool and login in Administrator Mode.

### 5. Set the paper information.

See  “6.1.5.10 Paper Information Setting” (Page 6-58) for more details on setting the paper information.


### 6. Select the printer that has been added.



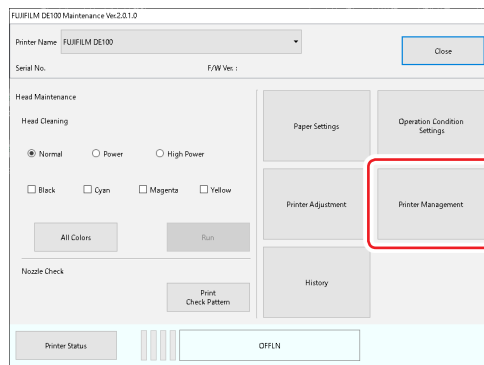
Maintenance is performed on the selected printer.

### 7. Configure the paper settings.

Make sure to perform this as the information displayed on the “Paper Settings” screen changes when the paper information is updated.

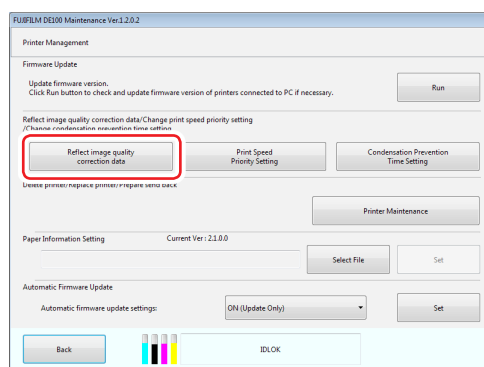
See  “6.2.4 Paper Settings” in the “Operation Guide” for more details.

## 8. Click the [Printer Management] button.



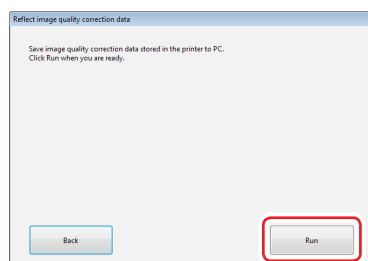
The “Printer Management” screen is displayed.

## 9. Click the [Reflect image quality correction data] button.



The “Reflect image quality correction data” screen is displayed.

## 10. Click the [Run] button.



The settings stored on the printer are loaded into the PC.  
Once the loading finishes, a dialog box indicating that the loading has finished appears.



### CAUTION

If the “Image quality correction data reflection failed.” screen appears, click the [Save Gray Adjustment Data] button on the “Printer Adjustment” screen. After updating the printer data, try again.

## 11. Click the [OK] button on the dialog.

When adding several printers, repeat step 6 and the following steps.


### 6.1.5.3 Replace Printer

The existing printer is switched to the new printer, and the paper information is also transferred to the new printer. This is used in cases such as when the printer has suffered a breakdown. There are two ways of replacing the printer: automatic and manual.

#### ■ Replacing the printer automatically

**1. Turn ON the automatic printer replacement function.**

This function is set to ON by default.

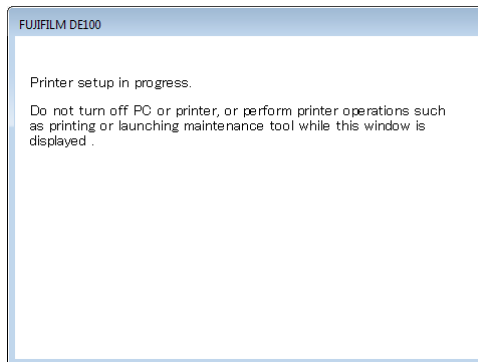
Refer to  “2.5.2 Turning ON the Automatic Printer Replacement Function” in the “Operation Guide”.

**2. With the printer to be replaced (old printer) disconnected from the PC, connect the replacement (new) printer to the PC using a USB cable.**

**3. Turn ON the printer.**

The printer setup screen is displayed.

The printer setup takes 1 to 30 minutes.




#### **CAUTION**

**Never turn off the PC or printer while setting up the printer.**

The printer setup screen closes when the printer replacement is complete.

## ■ Replacing the printer manually

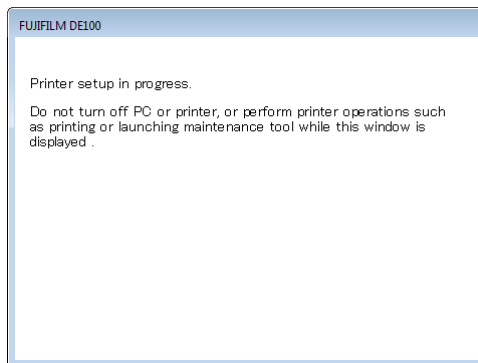
### 1. Turn OFF the automatic printer replacement function.

Refer to  “2.5.1 Turning OFF the Automatic Printer Replacement Function” in the “Operation Guide”.

### 2. With the printer to be replaced (old printer) disconnected from the PC, connect the replacement (new) printer to the PC using a USB cable.

### 3. Turn ON the printer.

The printer setup screen is displayed.  
The printer setup takes 1 to 30 minutes.



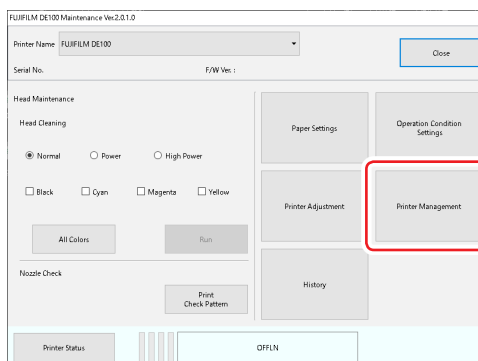
## CAUTION

Never turn off the PC or printer while setting up the printer.

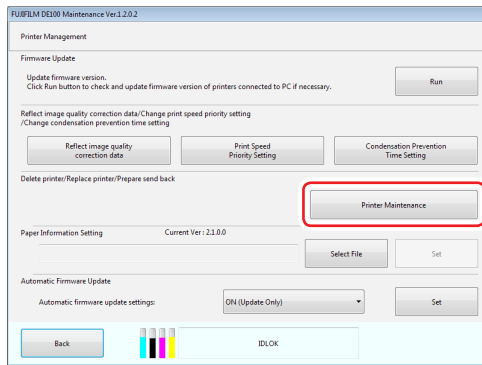
The printer setup screen closes when the printer replacement is complete.

### 4. Start the Maintenance Tool and login in Administrator Mode.

### 5. Click the [Printer Management] button on the main screen.

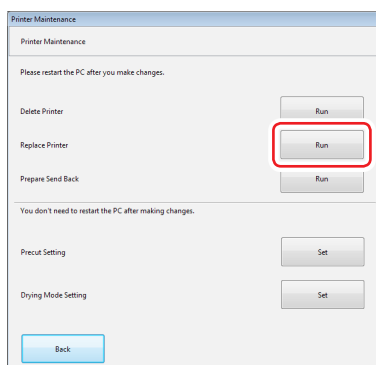


## 6. Click the [Printer Maintenance] button.



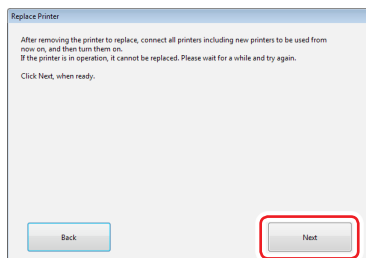
The “Printer Maintenance” screen is displayed.

## 7. Click the [Run] button from “Replace Printer”.

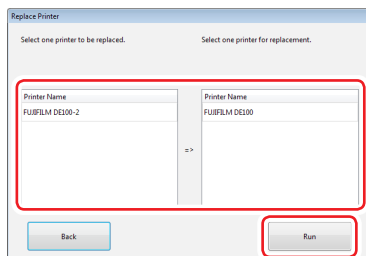


The “Replace Printer” screen is displayed.

## 8. Click the [Next] button.



## 9. Select a printer to replace from and a printer to replace to, and click the [Run] button.

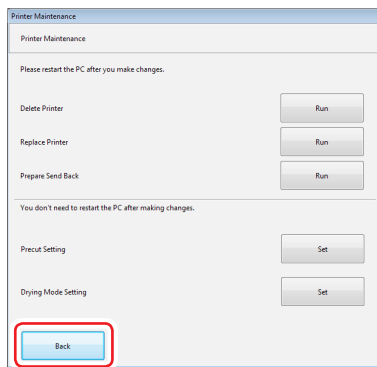


## CAUTION

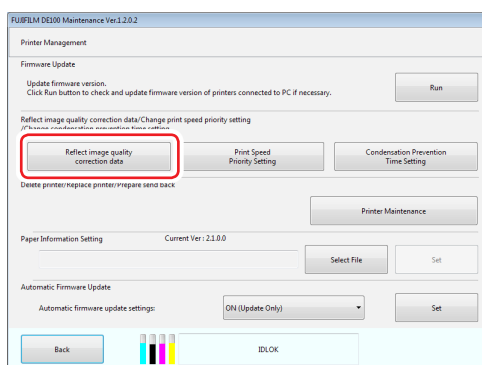
Never turn off the PC or printer while setting up the printer.

The printer setup screen closes when the printer replacement is complete.

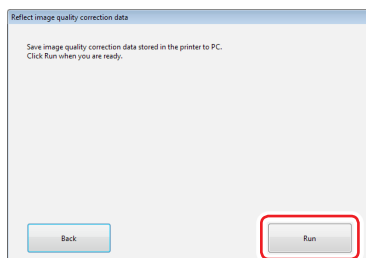
## 10. Click the [OK] button.

**11. Click the [Back] button.**

The “Printer Management” screen is displayed.

**12. Click the “Reflect image quality correction data” button.**

The “Reflect image quality correction data” screen is displayed.

**13. Click the [Run] button.**


The settings stored on the printer are loaded into the PC.  
Once the loading finishes, a dialog box indicating that the loading has finished appears.

**14. Click the [OK] button on the dialog.****15. Set the paper information.**

See  [“6.1.5.10 Paper Information Setting” \(Page 6-58\)](#) for more details on setting the paper information.

**16. Configure the paper settings.**

Make sure to perform this as the information displayed on the “Paper Settings” screen changes when the paper information is updated.

See  [“6.2.4 Paper Settings”](#) in the “Operation Guide” for more details.

### 6.1.5.4 Print Speed Priority Setting

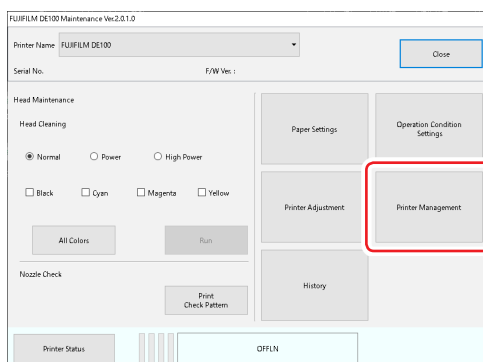
When unevennesses occur with a print of 152×102 mm or less, selecting [Standard] for the Print Speed Priority Setting may improve it. Even with [Standard] selected, if vertical unevennesses are found on printed paper, select [Quality priority].

Selecting [Standard] or [Quality priority] for Print Speed Priority Setting, the print speed will decrease slightly. The print speed for [Quality priority] is slower than [Standard].

[Speed priority] is only enabled for Print Speed Priority Setting when the print size is 152×102 mm or smaller. When Print Speed Priority Setting is [Speed Priority] and the print sizes are a mix of sizes smaller and bigger than 152 × 102 mm, the paper rewinds (up to a minute or more) and the print speed decreases because the Print Speed Priority Setting changes.

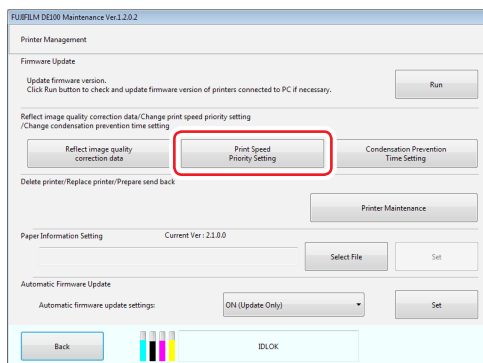
If you mix paper sizes to be printed, it is recommended that you set Print Speed Priority Setting to [Standard].

#### 1. Click the [Printer Management] button on the main screen.

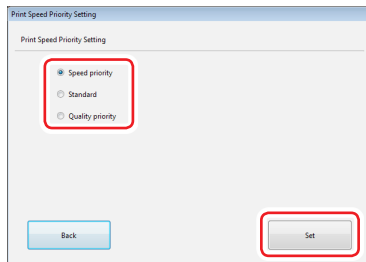


The “Printer Management” screen is displayed.

#### 2. Click the [Print Speed Priority Setting] button.



The “Print Speed Priority Setting” screen is displayed.

**3. Select the setting and click the [Set] button.**

Setting Item	Explanation
Speed priority	Prioritize the print speed and print.
Standard	Paper will be printed at the standard speed and quality.
Quality priority	Paper will be printed prioritizing quality.

The result dialog is displayed.

**4. Click the [OK] button on the dialog.**



### 6.1.5.5 Condensation Prevention Time Setting

To prevent condensation in the printer after turning the power off or printing, set the time that you want the fan and heater to run after finishing printing.

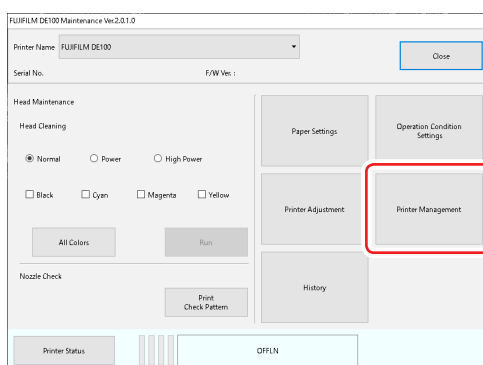
It is recommended that [Condensation Prevention Time Setting] be set in the following situations:

- The temperature falls below 15 °C at night or other times where the printer is installed
- The temperature inside the printer gets hot when printing a large amount continuously in an environment that is 20 °C or below

You can perform the following operations on a printer that has the condensation prevention time set while the fan and heater are running after the power has been turned off:

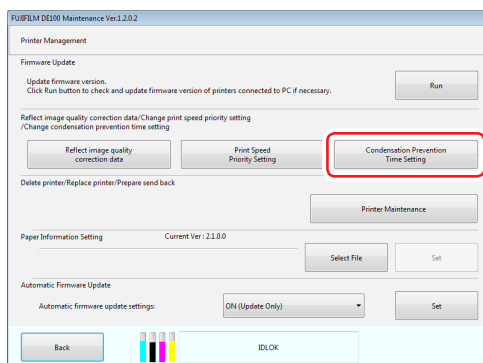
- To restart the printer, press the Power switch for one second.
- To turn off power to the printer without waiting for the set condensation prevention time to pass, press the Power and PAUSE switches at the same time for one second.

#### 1. Click the [Printer Management] button on the main screen.



The “Printer Management” screen is displayed.

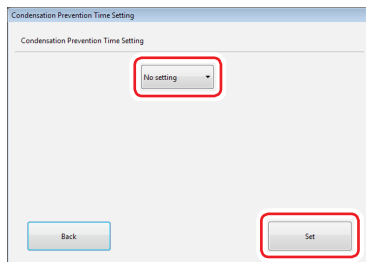
#### 2. Click the [Condensation Prevention Time Setting] button.



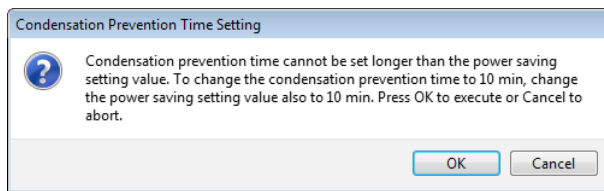
The “Condensation Prevention Time Setting “ screen is displayed.

**3. Select the time to prevent condensation and click the [Set] button.**

Setting values: No setting, 5 min, 10 min, 15 min, 20 min, 30 min, 45 min, 60 min, 90 min, and 120 min



If you selected a time longer than the time to switch to power saving mode, a confirmation message will appear. Clicking the [OK] button also automatically changes the time to switch to power saving mode.



A result dialog is displayed.

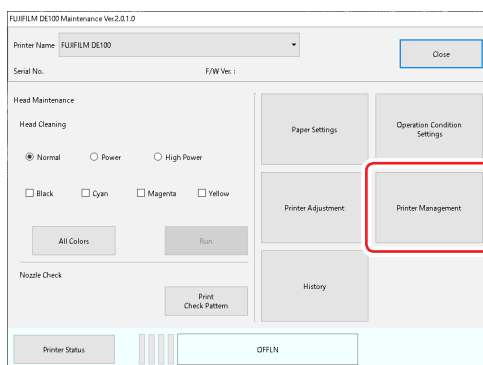
**4. Click the [OK] button on the dialog.****Note**

If the condensation prevention time is set in user mode, only a time to switch to power saving mode that is longer than the time set for the condensation prevention time will appear as a selection option.

### 6.1.5.6 Delete Printer

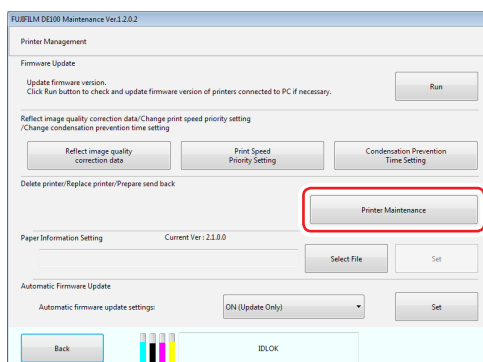
Delete the printer registered on the PC from the list. The printers that are turned off or not connected are removed from the list of printers.

1. Remove the USB cable connecting the printer to be deleted and the PC.
2. Start the Maintenance Tool and login in Administrator Mode.
3. Click the [Printer Management] button.



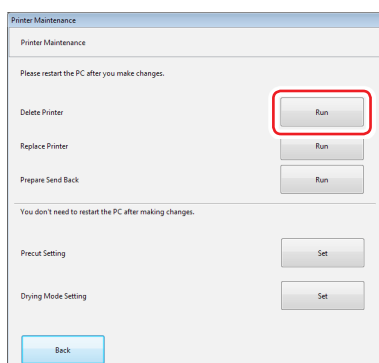
The “Printer Management” screen is displayed.

4. Click the [Printer Maintenance] button.



The “Printer Maintenance” screen is displayed.

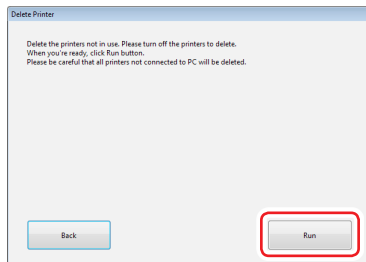
5. Click the [Run] button from “Delete Printer”.



The “Delete Printer” screen is displayed.

6. Check whether all printers to be used (i.e. to remain in the list) are turned ON and connected to the PC.

**7. Click the [Run] button.**



The printers that are turned off or not connected are removed from the list of printers. Once the deletion is complete, a dialog box indicating that the deletion has completed appears.

**8. Click the [OK] button on the dialog.**

**9. Return to the Main screen and close the Maintenance Tool.**

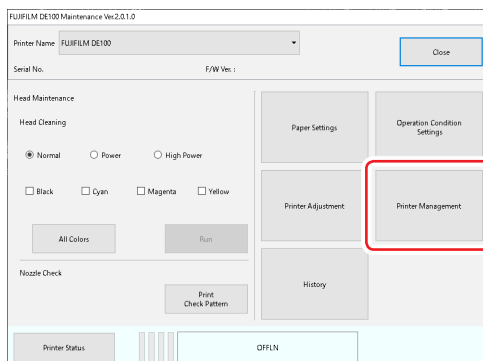
**10. Restart the computer.**

The deletion of the printer is reflected in the system after the PC restart.

### 6.1.5.7 Prepare Send Back

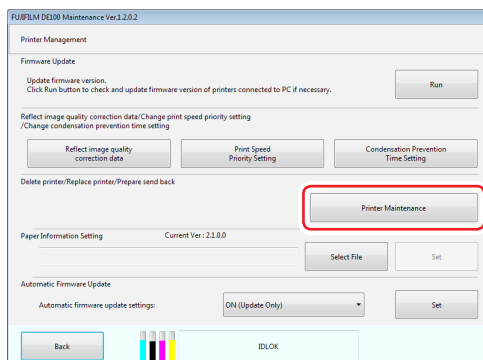
Save the data required for the printer send back repair to the PC.  
When returning the printer for repairs, follow the instructions from the service support and send this saved data together with the printer.

1. Click the [Printer Management] button on the Main screen.



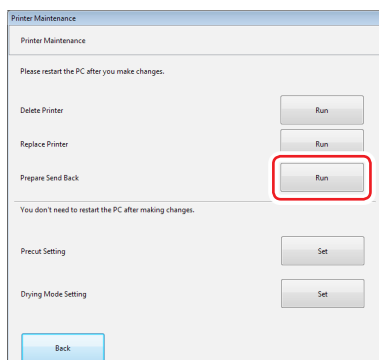
The “Printer Management” screen is displayed.

2. Click the [Printer Maintenance] button.



The “Printer Maintenance” screen is displayed.

3. Click the [Run] button from “Prepare Send Back”.



The “Select Folder.” screen is displayed.

**4. Choose a folder to save.****5. Click the [Select Folder] button.**

The following zip file is saved in the selected folder.

File name	sendback_XXXXXXXXXX_YYYYMMDDhhmmss.zip (XXXXXXXXXX: S/N, YYYY: Year, MM: Month, DD: Day, hh: Time, mm: Minute, ss: Second)
-----------	--

**6. Click the [OK] button.****7. Click the [Back] button.****8. Click the [Back] button.****9. Return to the Main screen and close the Maintenance Tool.****CAUTION**

If the “Operation failed” screen appears, click the [Save Gray Adjustment Data] button on the “Printer Adjustment” screen. After updating the printer data, try again.

### 6.1.5.8 Precut Setting

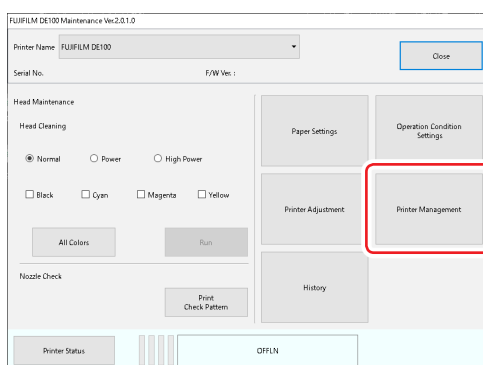
Set the add precut setting that enables the precut length of the print order end to be increased. This printer sucks paper to the print stand and starts printing. If paper curls due to the environment it is saved in or other reasons, the end of the paper may float above the print stand and touch the print head.

In order to prevent ink from adhering to paper that touches the print head and soiling it, set the add precut setting to ON. Setting the add precut setting to ON holds the end of the paper with the drier roller at the end of the print stand and then pulls the paper to start printing.

When the add precut setting is set to ON, 30 mm length is added to the precut length of the print order end.

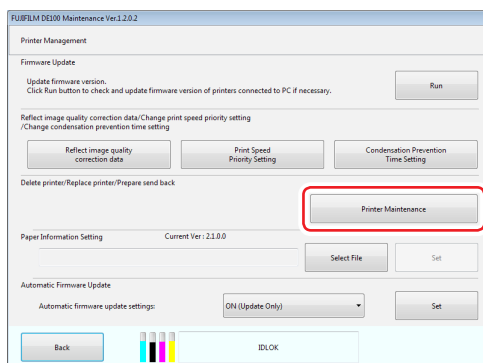
- Precut length when the add precut setting is set to OFF: 35 mm
- Precut length when the add precut setting is set to ON: 65 mm

#### 1. Click the [Printer Management] button on the main screen.



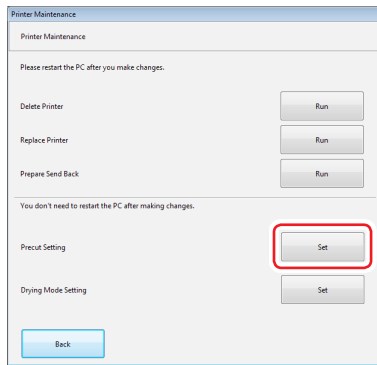
The “Printer Management” screen is displayed.

#### 2. Click the [Printer Maintenance] button.



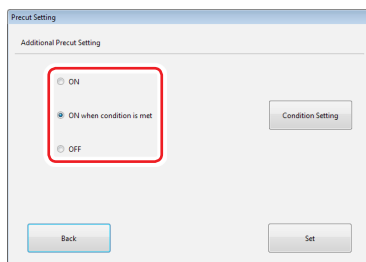
The “Printer Maintenance” screen is displayed.

**3. Click the [Set] button for “Precut Setting”.**




The “Precut Setting” screen appears.

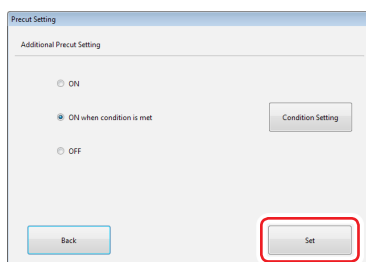
**4. Select the desired additional precut setting.**



Setting Item	Explanation
ON	Increases the precut length of the print order end for all the print jobs.
ON when condition is met	Increases the precut length of the print order end for the print jobs which have a match to the set conditions. When this item is selected, [Condition Setting] button is enabled.
OFF	Does not increase the precut length of the print order end.

If [ON when condition is met] is selected, set the conditions. Refer to  “Condition Setting” (Page 6-55).

**5. Click the [Set] button.**



A result dialog is displayed.

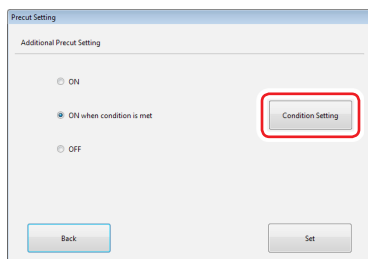
**6. Click the [OK] button on the dialog.**



## ■ Condition Setting

[Condition Setting] button is enabled only when [ON when condition is met] is selected.

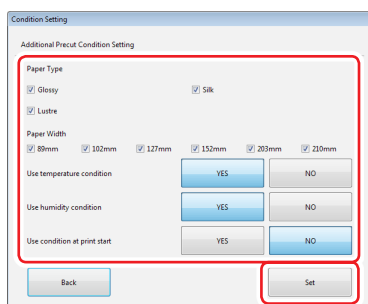
### 1. Click the [Condition Setting] button.



The “Condition Setting” screen is displayed.

### 2. Set the conditions and click the [Set] button.

The precut lengths will be increased for the print jobs which are meeting the set conditions.



Setting Item	Explanation
Paper Type	Precut lengths will be increased for those paper types with the checkbox selected.
Paper Width	Precut lengths will be increased for those paper widths with the checkbox selected.
Use temperature condition	When [YES] is selected, precut lengths will be increased for those temperature conditions are met. Temperature condition: Head temperature is not in the range from 0 to 28 degrees Celsius.
Use humidity condition	When [YES] is selected, precut lengths will be increased for those humidity conditions are met*.
Use condition at print start	When [YES] is selected, precut lengths will be increased for those print initiation conditions are met. Print initiation conditions: Print jobs in any of the following cases. <ul style="list-style-type: none"> <li>• The first print job after the printer is turned on.</li> <li>• The print job after the head maintenance.</li> <li>• The print job after 120 minutes or more from the previous one.</li> </ul>

\* For now, the humidity conditions is always turned ON if [YES] is selected for this item.

The result dialog is displayed.

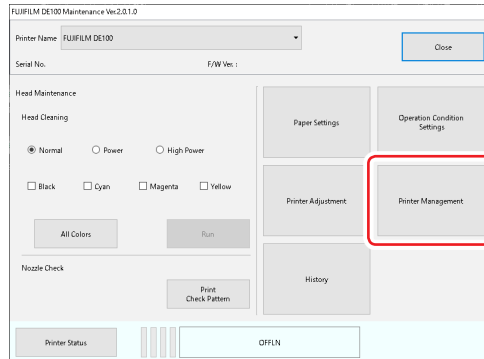
### 3. Click the [OK] button on the dialog.

### 4. Click the [Back] button.

### 6.1.5.9 Drying Mode Setting

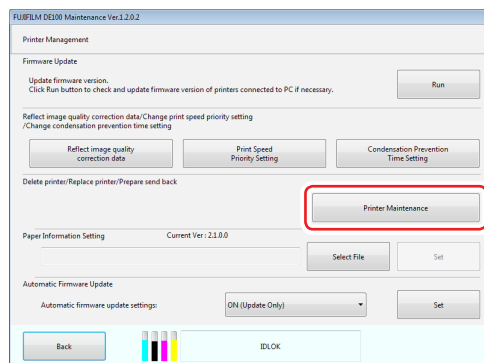
In order to prevent condensation in the printer, select the drying mode (controlling fans and heater) according to the type of usage and the environment.

#### 1. Click the [Printer Management] button on the main screen.



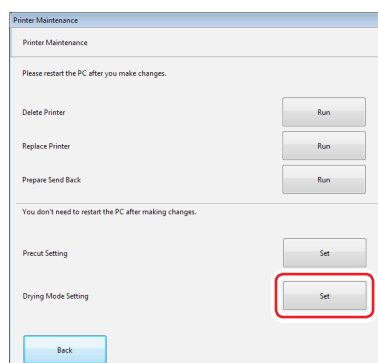
The “Printer Management” screen is displayed.

#### 2. Click the [Printer Maintenance] button.



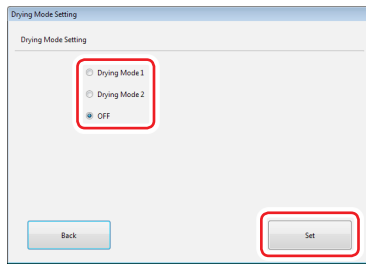
The “Printer Maintenance” screen is displayed.

#### 3. Click the [Set] button of “Drying Mode Setting”.



The “Drying Mode Setting” screen is displayed.

#### 4. Select the drying mode and click the [Set] button.



Setting Item	Explanation
Drying Mode 1	For a continuous and massive print, select this item when condensation still happens even though Drying Mode 2 has been selected. The fan and heater work when the print job interrupts per certain number of print.
Drying Mode 2	Select this item when it is in a low-temperature environment (18 degree Celsius). The fan and heater works after a print job finished for a certain period of time. If the next print job has been received in the drying period, the next print job will still be started. However, the remaining drying time will be carried over to the next drying time. The maximum of drying time is 30 minutes.
OFF	Select this item when it is not in a low-temperature environment (below 20 degrees Celsius).

The result dialog is displayed.

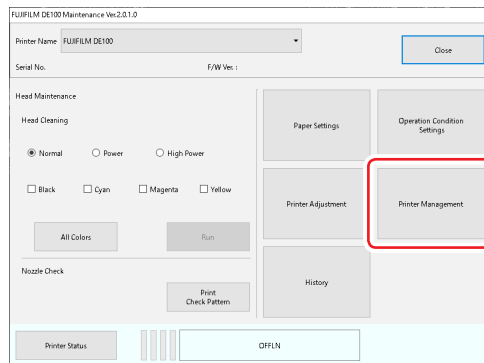
#### 5. Click the [OK] button on the dialog.

### 6.1.5.10 Paper Information Setting

The paper information is set for all printers connected to the PC. The contents of the specified paper definition file are applied to each printer.

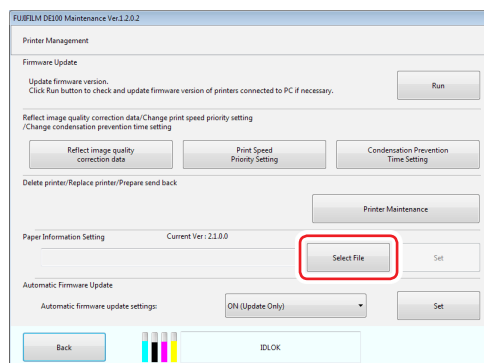
This function is used when the printer has been added/replaced manually or when a new paper type has been added from Fujifilm.

#### 1. Click the [Printer Management] button on the main screen.



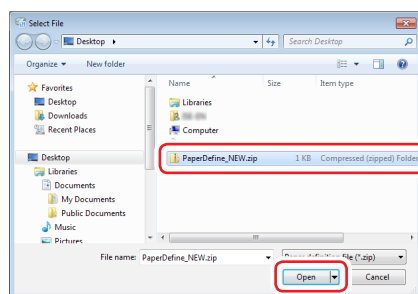
The “Printer Management” screen is displayed.

#### 2. Click the [Select File] button.



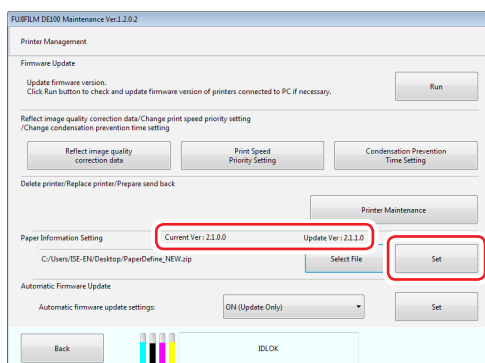
The “Select File” screen is displayed.

#### 3. Select a paper definition file (zip file), and then click the [Open] button.



The version and file path of the selected paper definition file is displayed on the “Printer Management” screen.

4. Check that the version of the selected paper definition file is newer than the current version and click the [Set] button.



The “Update Paper Information” screen is displayed.


5. Connect and turn on all of the printers whose paper information you wish to set to the PC.
6. Click the [OK] button.  
The update of paper information is started.



### CAUTION

**Never turn off the PC or printer while updating the paper information.**

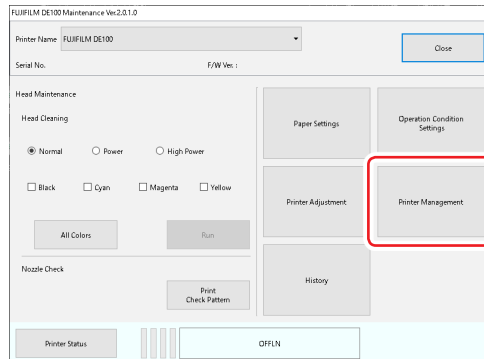
Once the paper information has been updated, a dialog box indicating that the update has finished appears.

7. Click the [OK] button on the dialog.
8. Restart the computer.  
The changes to the paper information settings are applied to the PC after it restarts.
9. Configure the paper settings.  
Make sure to perform this as the information displayed on the “Paper Settings” screen sets when the paper information is updated.  
See  “6.2.4 Paper Settings” in the “Operation Guide” for more details.

### 6.1.5.11 Automatic Firmware Update

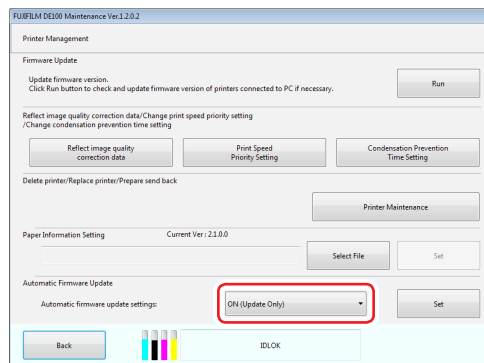
Select the automatic firmware update setting.

#### 1. Click the [Printer Management] button on the main screen.



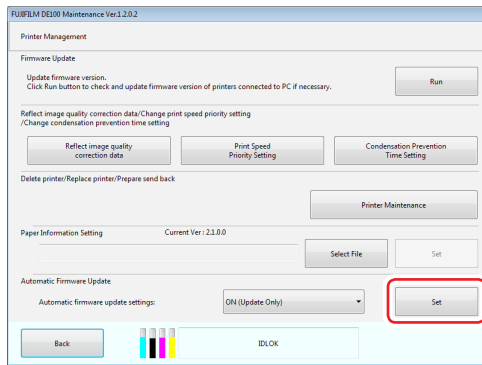
The “Printer Management” screen is displayed.

#### 2. Select the automatic firmware update setting.



Setting Item	Explanation
OFF	The firmware is not updated automatically.
ON	When connecting the PC with the printer, check the version of the PC software and printer firmware. If the combination of the PC software and the printer's firmware is found to be incorrect, the firmware is upgraded or downgraded for the correct combination with the PC software.
ON (Update Only)	When connecting the PC with the printer, check the version of the PC software and printer firmware. If the printer's firmware is found to be older than the correct combination with the PC software, the firmware is updated to the correct version.

### 3. Click the [Set] button.



The settings are applied.  
The result dialog is displayed.

### 4. Click the [OK] button on the dialog.

